



Accessible | Affordable | Functional

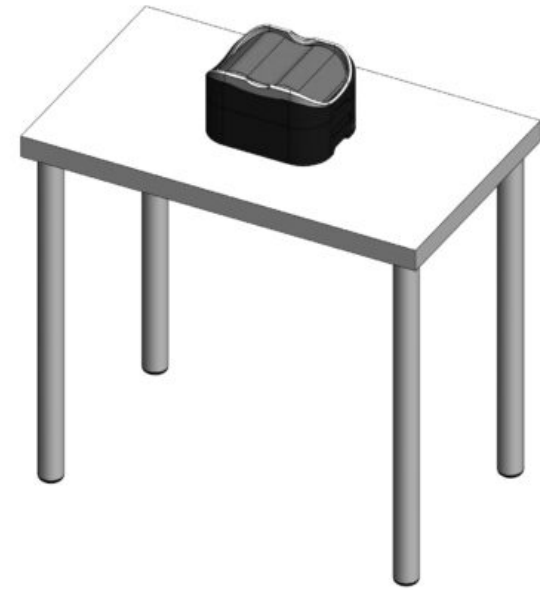


Spine**HUB**

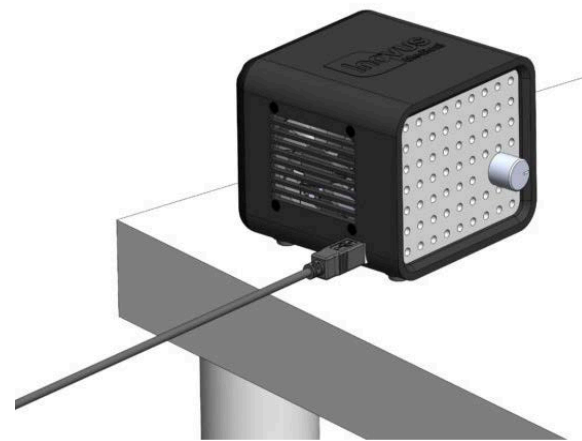


Setup Manual

Product number: 00002199



1 | Place the Endoscopic LumbarBox Extended on a stable desktop surface with enough space for your laptop and accessories.



2 | Take the Inovus light source and the USB power cable. Insert the USB type B power cable into the light box.



3 | Plug the USB connector into your laptop to power the light source.



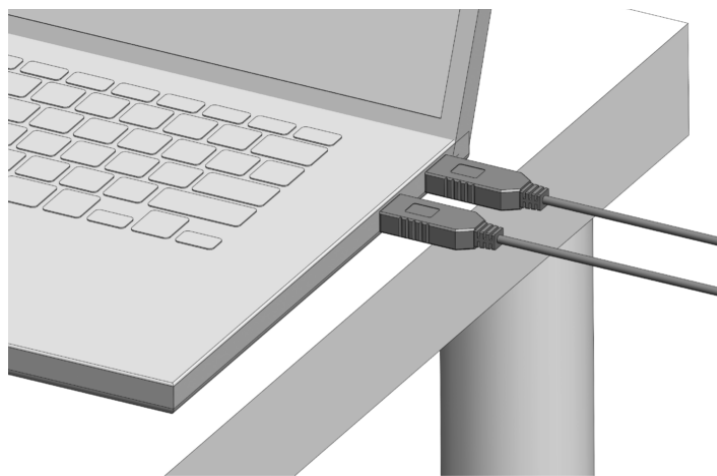
4 | Insert one end of the fibre optic cable into the connector on the light source.



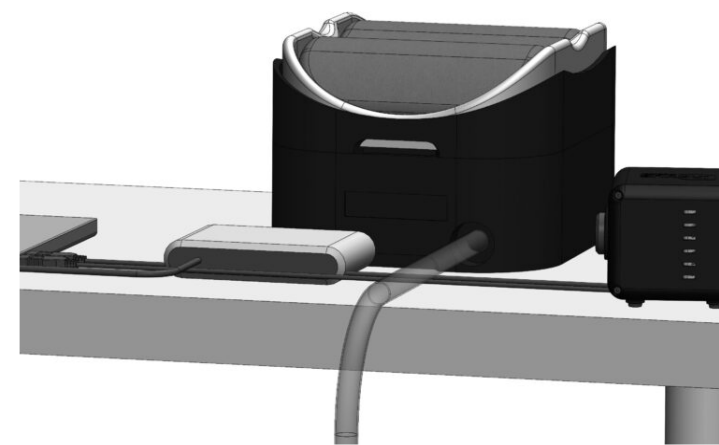
5 | Connect the other end of the fibre optic cable to the endoscope as shown.



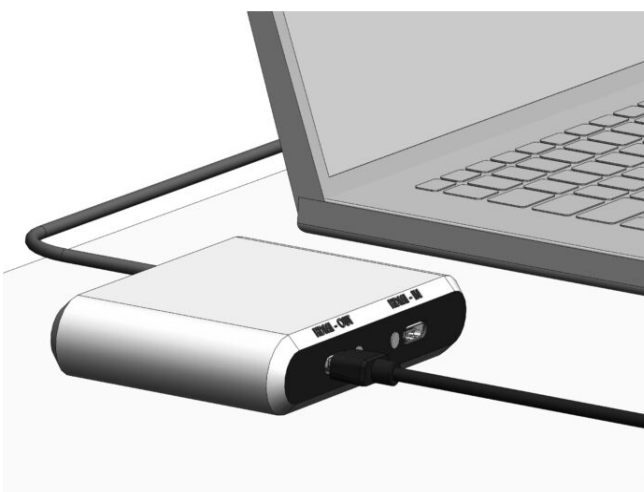
6 | Attach the camera coupler to the eyepiece of the scope.



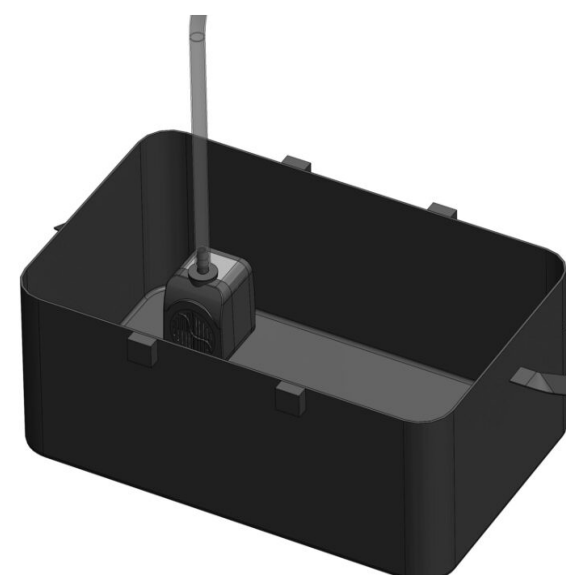
7 | Connect the camera to your laptop using the designated USB cable.



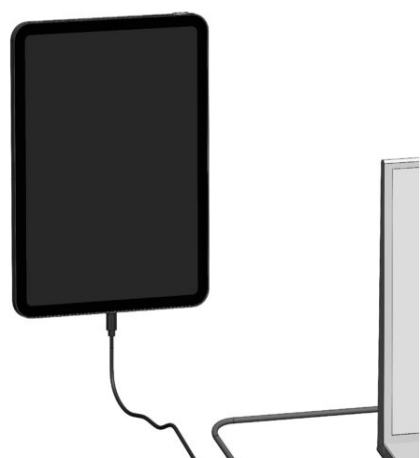
10 | Attach the large clear water tube to the rear water inlet port of the Endoscopic LumbarBox Extended.



8 | For dual-view functionality:  
Use the capture card, plugging it into the USB port on the back of your laptop.  
Connect the HDMI cable into the front HDMI port on the capture card



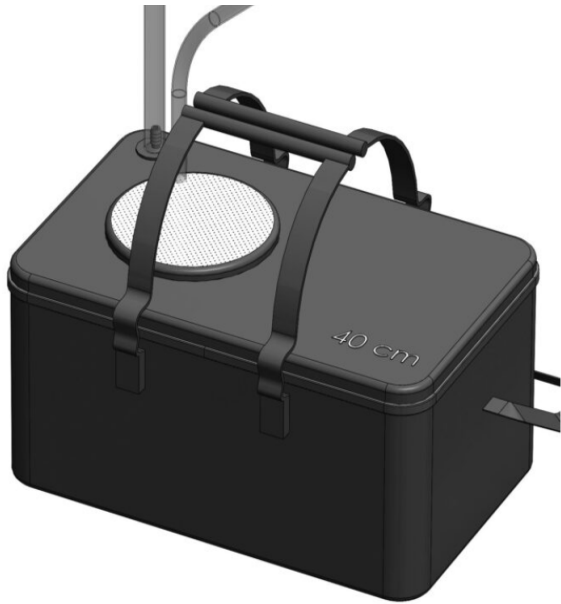
11 | Place the water pump inside the water bag.  
Attach the narrow inflow tube to the top connector of the pump.



9 | Connect the other end (USB/Lightning/USB-C) to a phone or iPad.



12 | Feed the narrower fluid tube now connected to the pump, through the meshed panel in the lid of the water bag connecting the other end into the back of the endoscope.



- 13 | Connect the wider outflow tube that is connected to the back of the Endoscopic LumbarBox Extended to the outflow connector on the top of the water bag. Fill the water bag up with water ensuring it is at a level over the depth of the pump.



- 14 | Fill the Endoscopic LumbarBox Extended base unit with water up to the water sensor panel shown here.



- 15 | Fill the Endoscopic LumbarBox Extended base unit with water up to the water sensor panel shown here.