

# InterhemisphericBox

Interhemispheric  
approach to the  
midline



**Neurosurgical simulator  
equipped with mobile AR  
and navigation.**



## Compatible with Standard Navigation\*

Use the Navigation Frame\*\* along with the included MRI to start navigating your approach

\*Contact us at [support@upsurgeon.com](mailto:support@upsurgeon.com) to check the compatibility of your Navigation technology.

\*\*Navigation Frame is sold separately.



## Augmented Reality App

Get the Neurosurgery App to explore cases, navigate 3D models, and utilize Augmented Reality on the Box to strategize your procedure.



## Mobile Navigation Available

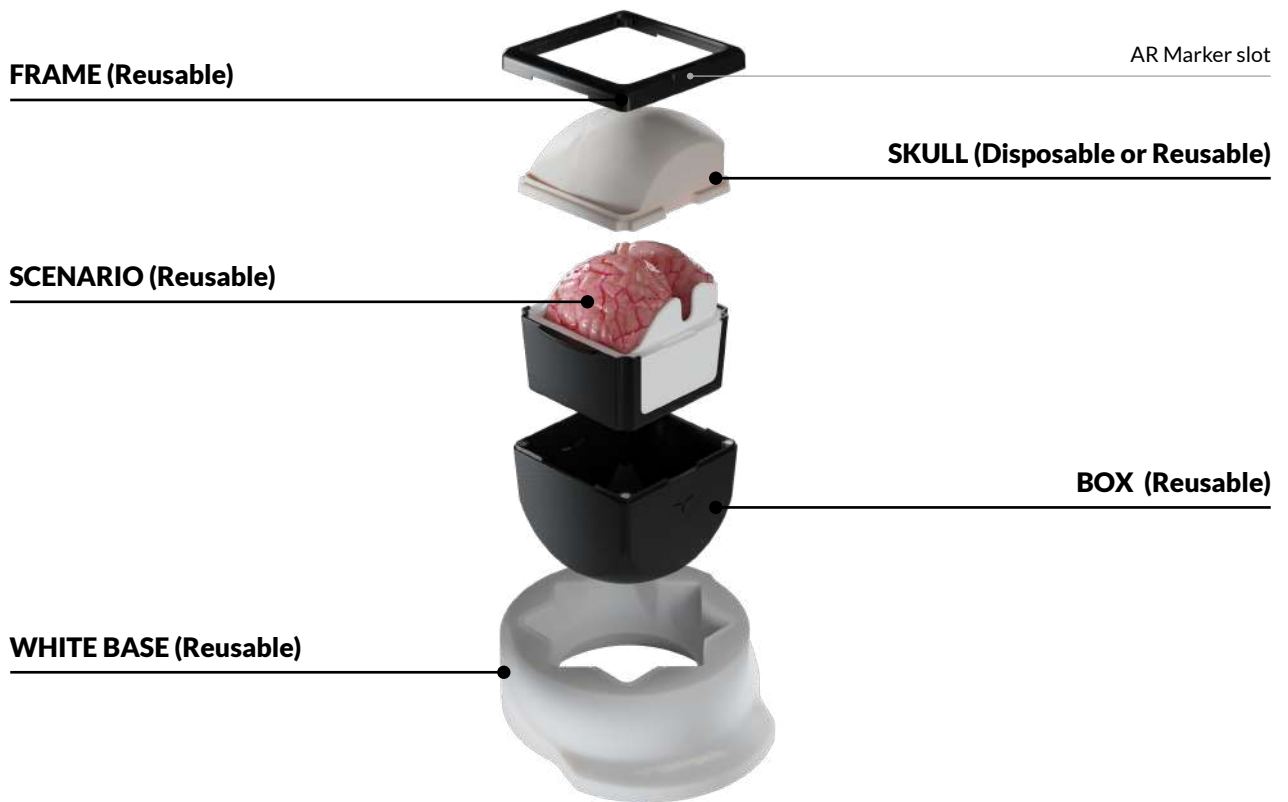
Get the Neurosurgery App, connect the magnetic probe to your smartphone, and navigate the Box through the MRI.



## Disposable Parts

Designed to provide infinite training, disposable parts are intended to be used with the Box and replaced to keep track of your training.

## How it is composed



## Surgical Realism

### ANATOMY INCLUDED IN THIS APPROACH:

- Mid frontal hemisphere
- Mid parietal hemisphere
- Third and fourth segment of the anterior cerebral artery (ACA)
- Corpus callosum

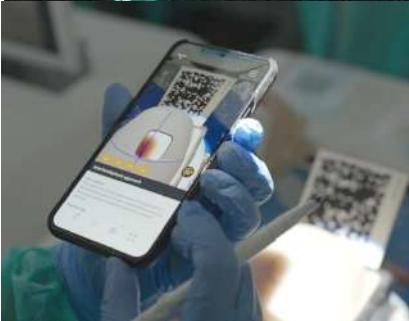


# Neurosurgery App



## Mobile/Standard Navigation

Use the NavigationPen included with the Neurosurgery App for mobile neuronavigation. Alternatively, use the NavigationFrame or the NavigationHead (sold separately) along with the included MRI, for standard neuronavigation.



## Augmented Reality

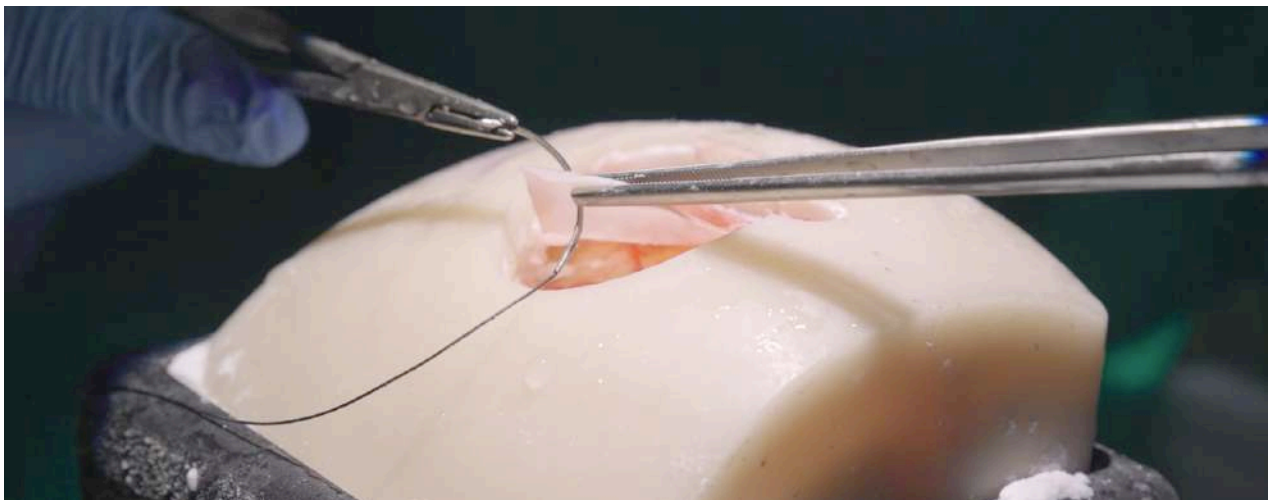
InterhemisphericBox works with an *Augmented Reality* app to provide a 360° training experience.

Frame the QR Code and download **Neurosurgery App** for **Google Play** and **Apple Store**.

# Craniotomies with Disposable Skulls

Perform craniotomies, dural openings, and reconstructions using disposable Interhemispheric skulls. Afterwards, replace the skull and restart as many times as needed.

- Craniotomy Planning
- Craniotomy
- Dura opening
- Dura suspensions
- Dura closing
- Skull closing/reconstruction



# What is included

- White base for patient positioning
- 1x Spatula
- 1x Bayonet Forceps
- 1x AR Marker for Augmented Reality App
- 1x Mobile Navigation Kit
- 1x Lubricant

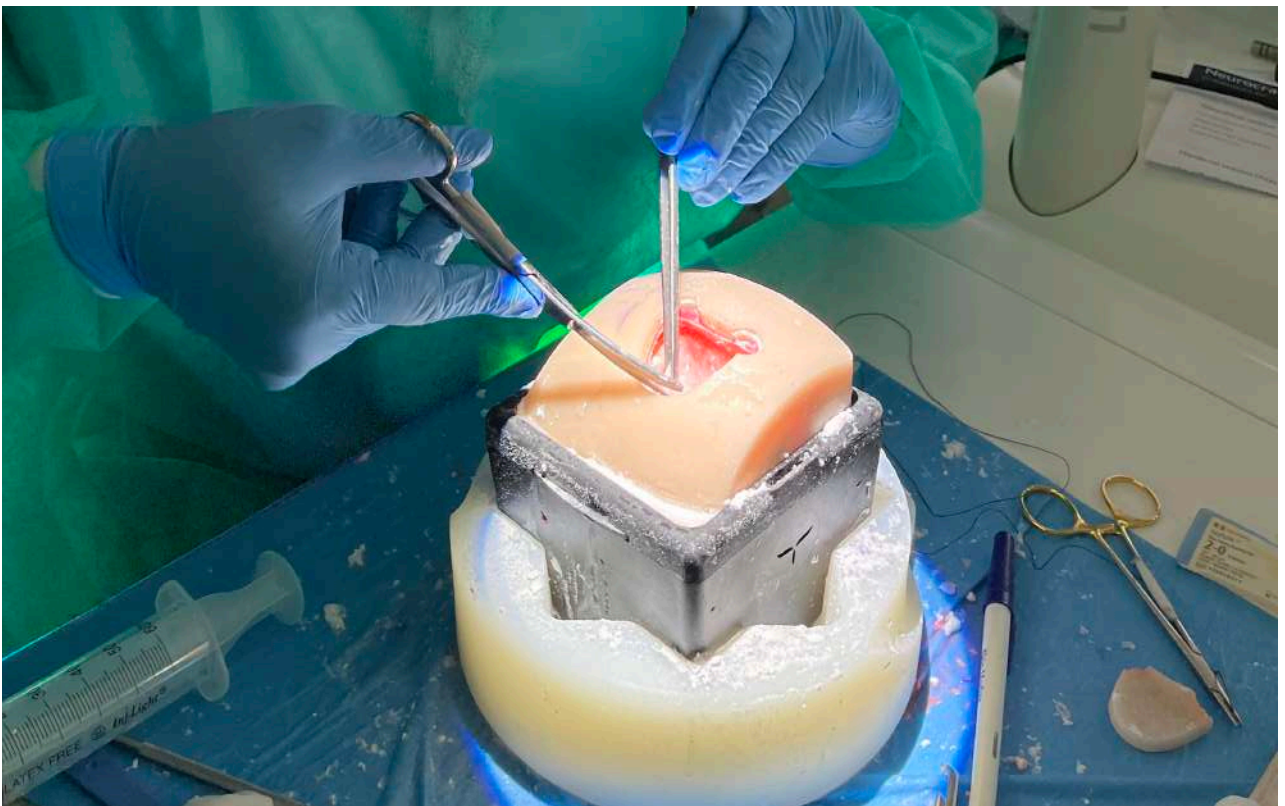


# General warnings

**THIS PRODUCT CONTAINS METAL MAGNETS: DO NOT PUT IT INTO A MAGNETIC RESONANCE SCANNER AND DO NOT USE IT WITH ANY MACHINE THAT WORK WITH ELECTROMAGNETS**

- Adult assembly required
- Never leave children unattended with the box
- Never put hot liquids above the tools
- Never put chemical substances above the tools
- Wash with water, do not use chemical products
- Keep the product away from any heat source

All materials used to produce UpSurgeOn products are certified, safe and non-toxic. Use of gloves, protective glasses and mask is always suggested to maintain the cleanliness of the simulator and the tools, and as a standard practice during each simulation. Wearing safety equipment is mandatory in the use of drilling simulation.





## Reach out to us

If you wish to acquire further information, please contact us at the following contact details according to your country of origin.

### Europe

excluding UK & Ireland

**UpSurgeOn**

upsurgeon.com  
info@upsurgeon.com

### USA, UK & Ireland

**Inovus Medical**

inovus.org  
info@inovus.org

### Mexico

**Aritmedica**

aritmedica.com.mx  
artimedica@artimedica.com.mx

### Brasil

**Spinetech**

spinetech.com.br  
mozart@spinetech.com.br

### Saudi Arabia

**Anfas Medical**

anfasmedical.com  
mabulaila@anfasmedical.com

### Hong Kong

**Montsmed**

montsmed.com  
timothykong@montsmedhk.com

### South Korea

**C.M. Blue**

cmblue.co.kr  
thjosephkim@cmblue.co.kr

### Rest of the world

**UpSurgeOn**

upsurgeon.com  
info@upsurgeon.com

## Follow UpSurgeOn

UpSurgeOn is a hi-tech company specialized in psychomotor skill augmentation in microsurgeries through the use of bleeding-edge virtual and physical simulation technologies.



Go to website [www.upsurgeon.com](http://www.upsurgeon.com)