

# Posterior CervicalBox

Hyper-realistic Spinal Surgery  
Simulator for Posterior Approaches  
to the Cervical Spine

From C2-C6



## Pathologies

Spondylotic Stenosis: 5 levels of posterior compression to be operated through posterior laminectomies (C2, C3, C4, C5, C6).



## Features



### Modularity

6 Operable Levels in 1 single simulator  
Disposable Spine Level



### Surgical Realism

The most realistic simulator for posterior cervical approach



### Mobile X-Ray\*

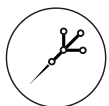
Get the Neurosurgery App and simulate fluoroscopy using Mobile X-Ray Technology to set landmarks and plan your surgical approach.

*\*Attention: Mobile X-Ray module works on Apple Devices only.*



### Standard X-Ray and CT Scan

The simulator is compatible with standard X-Ray, fluoroscopy and CT. Scan it and visualize the positioning of the fixation implants.



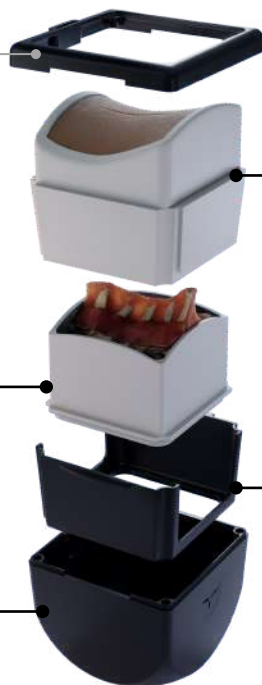
### Compatible with Standard Navigation

Upload the MRI scan on the navigator and start navigating the Box.

*\*Contact us at [support@upsurgeon.com](mailto:support@upsurgeon.com) to check the compatibility of your Navigation technology.*

# How it is composed

AR Marker slot



**SKIN LEVEL**

*Open Version: Reusable*

*MIS Version: Disposable*

**SPINE LEVEL (Disposable)**

**FRAME (Reusable)**

**BASE (Reusable)**

# The highest level of detail

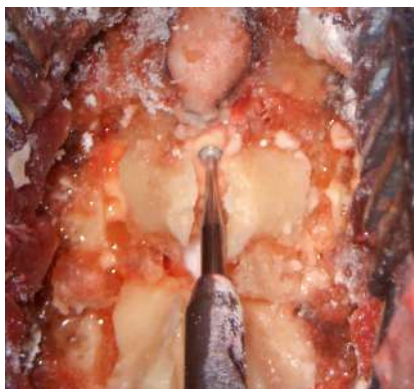
## PROCEDURES:

Multilevel posterior decompressions for spondylotic myelopathy through:

- Posterior Laminectomies from C2 to C6 (5 laminectomies)
- Posterior Laminoplasties from C2 to C6 (5 laminoplasties)
- Screw fixations from C2 to C6

## SURGICAL CAPABILITIES:

- **Laminectomies, laminoplasties and flavectomies**  
5 (C2, C3, C4, C5, C6)
- **Instrumented surgery**  
Placement of screws and any other type of posterior cervical fixation, according to the above-mentioned levels
- **Instrumented surgery**  
Placement of any artificial disc and body, according to the above-mentioned levels (disc cage, somatic cage, anterior plates, somatic screws)



# Surgical Realism



1. Ultra-accurate anatomy
2. Hyper-realistic materials



## ANATOMY INCLUDED IN THIS APPROACH:

- Skin
- Vertebral bodies from C2 to C6
- Intersomatic discs from C2 to C6
- Paravertebral muscles
- Vertebral arteries
- PLL (Posterior Longitudinal Ligament)
- Spinal cord
- Peridural fat

# Mobile X-Ray

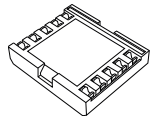
Get the **Neurosurgery App\*** to simulate **fluoroscopy** with **Mobile X-Ray Technology** to set your trajectory and navigate your **endoscope** or any other **tubular instrument** in real time.

*\*Attention: Mobile X-Ray module works on Apple Devices only.*

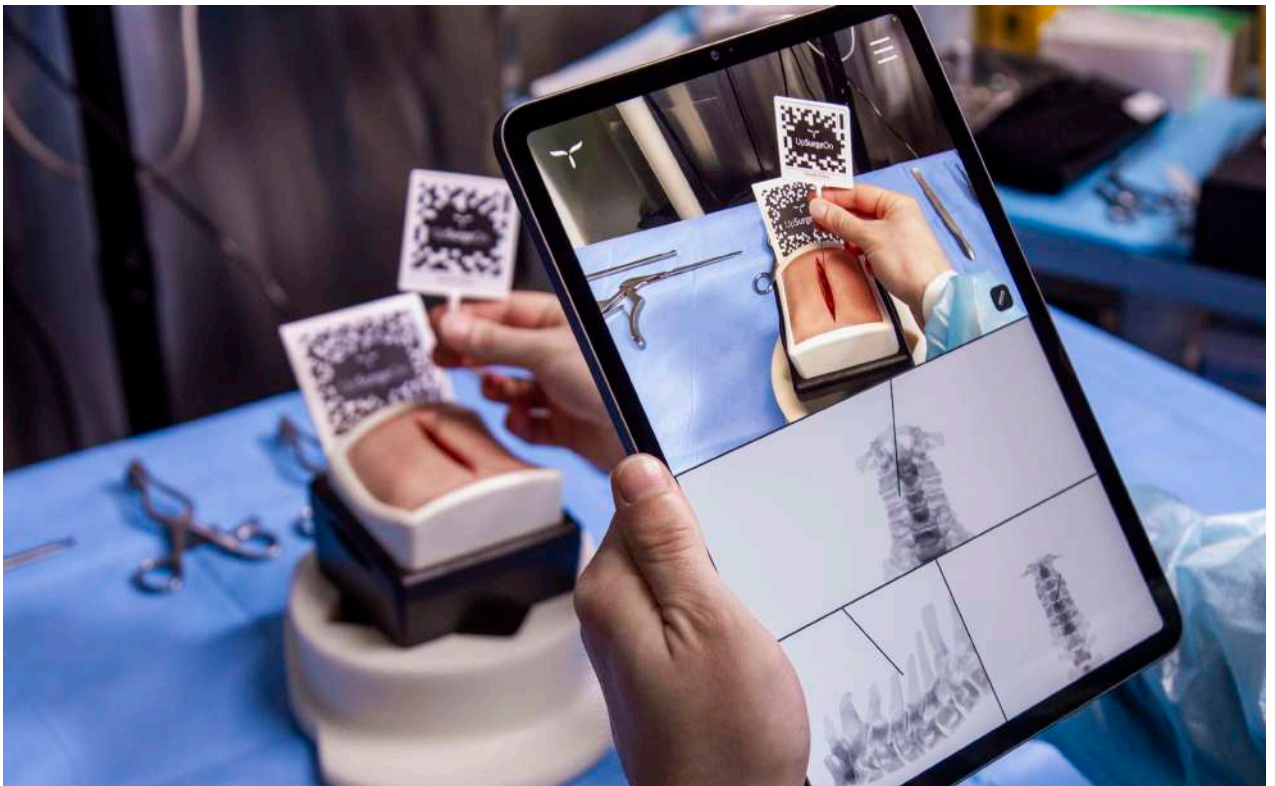


Neurosurgery  
App\*

+



Mobile X-Ray  
Kit





# Standard Imaging

Scan the box with X-Ray and CT to verify the level and visualize the positioning of the fixation implants\*.

\*The box is not designed for MRI; do not subject it to MRI scans as it contains metallic components.

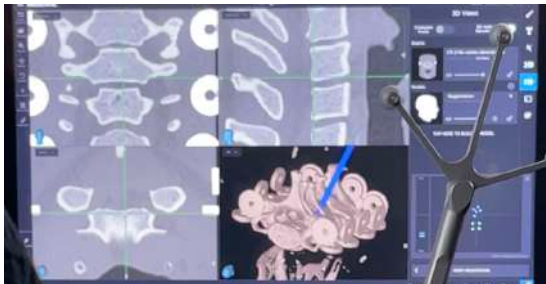


# Navigation\*

Upload the CT scan on the navigator and start navigating the Box.

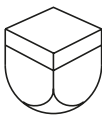
\*Contact us at [support@upsurgeon.com](mailto:support@upsurgeon.com) to check the compatibility of your Navigation technology.

Please note: The NavigationFrame is not included.



# Disposable Parts

Designed to specifically mimic the properties of human tissues, such as softness, elasticity, and texture.



Box  
Reusable

+



Vertebral Level  
Disposable

+

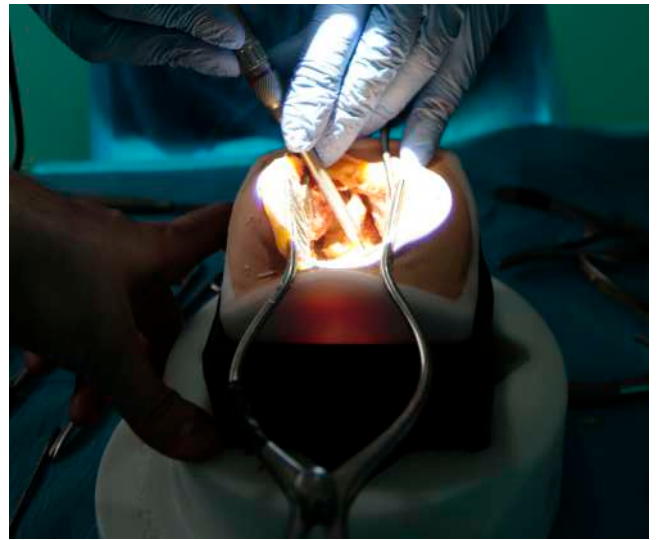
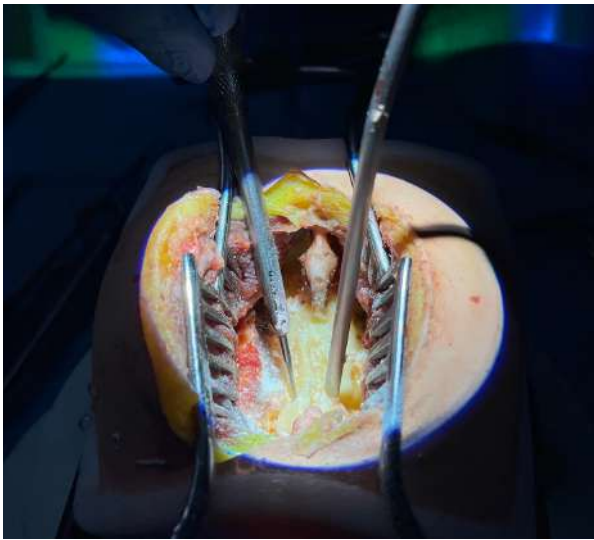


Skin Level  
Reusable

# What is included

- Box
- 1 Skin Level
- 1 Vertebral Level
- White base for Box positioning
- AR Marker
- Mobile X-Ray tools
- Mobile Navigation tools
- Lubricant





## What is included

- Posterior CervicalBox:
  - Skin Layer
  - Spine Layer
  - Box
  - White Base
- Mobile X-Ray Kit



## General warnings

**THIS PRODUCT CONTAINS METAL MAGNETS: DO NOT PUT IT INTO A MAGNETIC RESONANCE SCANNER AND DO NOT USE IT WITH ANY MACHINE THAT WORK WITH ELECTROMAGNETS**

- Adult assembly required
- Never leave children unattended with the box
- Never put hot liquids above the tools
- Never put chemical substances above the tools
- Wash with water, do not use chemical products
- Keep the product away from any heat source

All materials used to produce UpSurgeOn products are certified, safe and non-toxic. Use of gloves, protective glasses and mask is always suggested to maintain the cleanliness of the simulator and the tools, and as a standard practice during each simulation. Wearing safety equipment is mandatory in the use of drilling simulation.

## Reach out to us

If you wish to acquire further information, please contact us at the following contact details according to your country of origin.

### Europe

excluding UK & Ireland

**UpSurgeOn**

upsurgeon.com  
info@upsurgeon.com

### USA, UK & Ireland

**Inovus Medical**

inovus.org  
info@inovus.org

### Mexico

**Aritmedica**

aritmedica.com.mx  
artimedica@artimedica.com.mx

### Brasil

**Spinetech**

spinetech.com.br  
mozart@spinetech.com.br

### Saudi Arabia

**Anfas Medical**

anfasmedical.com  
mabulaila@anfasmedical.com

### Hong Kong

**Montsmed**

montsmed.com  
timothykong@montsmedhk.com

### South Korea

**C.M. Blue**

cmblue.co.kr  
thjosephkim@cmblue.co.kr

### Rest of the world

**UpSurgeOn**

upsurgeon.com  
info@upsurgeon.com

## Follow UpSurgeOn

UpSurgeOn is a hi-tech company specialized in psychomotor skill augmentation in microsurgeries through the use of bleeding-edge virtual and physical simulation technologies.



Go to website [www.upsurgeon.com](http://www.upsurgeon.com)