

# Posterior LumbarBox

10 Operable Levels  
From L1 to S1 - Left/Right



## Pathologies

- 3 Paramedian Herniations
- 2 Foraminal Herniations
- 2 Extraforaminal Herniations
- 1 Central Herniation
- 1 Canal Stenosis

## Features



### Modularity

10 Operable Levels in 1 single simulator  
Two disposable levels: Skin Level + Spine Level



### Surgical Realism

With this simulator, we have achieved the highest level of realism ever seen in spine surgery.



### Mobile X-Ray\*

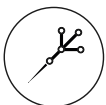
Get the Neurosurgery App and simulate fluoroscopy using Mobile X-Ray Technology to set landmarks and plan your surgical approach.

*\*Attention: Mobile X-Ray module works on Apple Devices only.*



### Standard X-Ray and CT Scan

The simulator is compatible with standard X-Ray, fluoroscopy and CT. Scan it and visualize the positioning of the fixation implants.

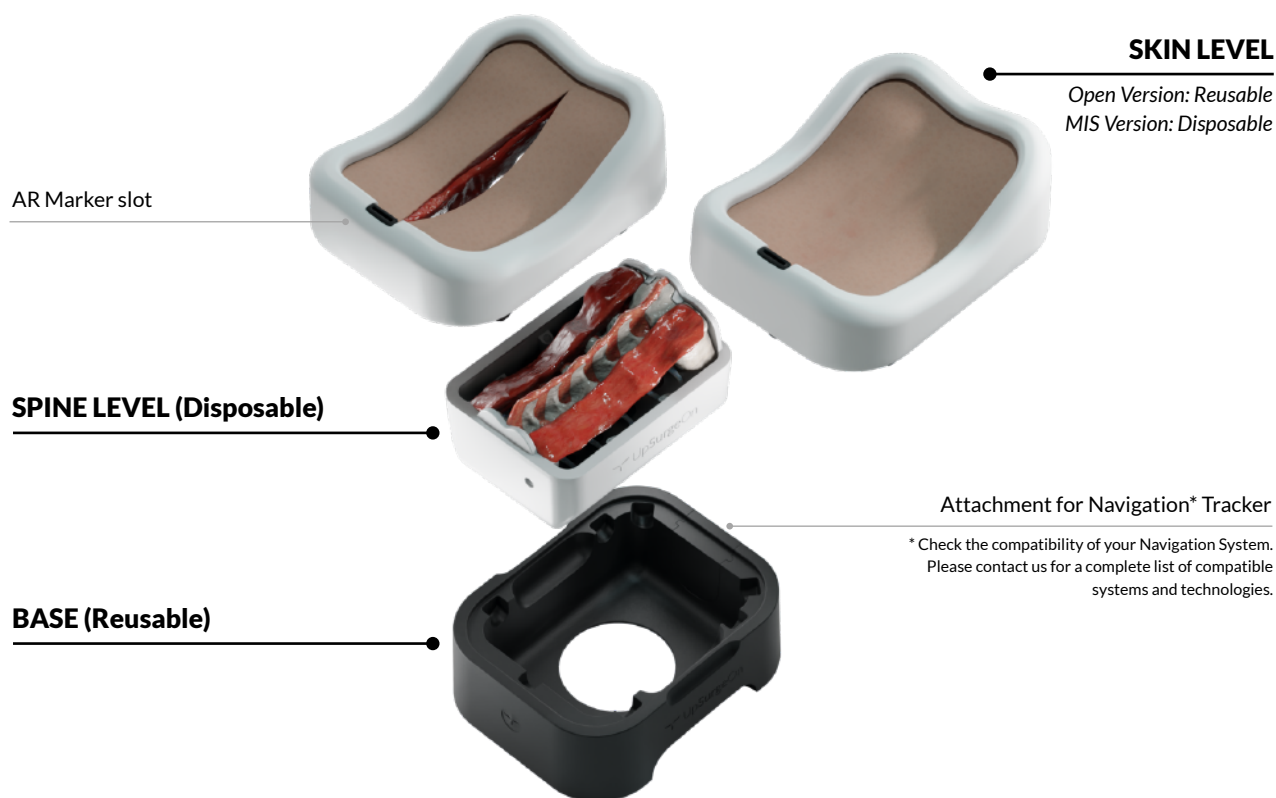


### Compatible with Standard Navigation

Upload the MRI scan on the navigator and start navigating the Box.

*\*Contact us at [support@upsurgeon.com](mailto:support@upsurgeon.com) to check the compatibility of your Navigation technology.*

# How it is composed



# The highest level of detail

## PROCEDURES:

- **PLIF** (Posterior Lumbar Interbody Fusion)
- **TLIF** (Transforaminal Lateral Interbody Fusion)
- **Open and percutaneous approaches** (open reusable Skin Level and MIS reusable Skin Level respectively)

## SURGICAL CAPABILITIES:

- **Laminectomies and flavectomies** from L1 to L5
- **Multiple discectomies**  
Nerve root decompression through discectomies feasible from L1 to S1 (5 discectomies, L1-2, L2-3, L3-4, L4-5, L5-S1)
- **Multiple corpectomies**  
Total corpectomy feasible from L1 to L5 (5 corpectomies)
- **Instrumented surgery**  
Placement of any artificial disc and body, according to the above-mentioned levels (disc cage, somatic cage, anterior plates, somatic screws)

## PATHOLOGIES:

### Left Side

L1-2 | Paramedian Herniation  
L3-4 | Foraminal Herniation  
L5-S1 | Foraminal Herniation



### Right Side

L1-2 | Extraforaminal Herniation  
L3-4 | Paramedian Herniation  
L4-5 | Extraforaminal Herniation  
L5-S1 | Paramedian Herniation

# The highest level of detail



- 1. Ultra-accurate anatomy
- 2. Hyper-realistic materials

## ANATOMY INCLUDED IN THIS APPROACH:

- Open and closed skin
- Paravertebral muscles
- Flavum Ligament
- PLL (Posterior Longitudinal Ligament)
- Vertebrae from L1 to S1
- Discs from T12-L1 to L5-S1 (5 discs)
- Spinal cord
- Nerve roots
- Peridural fat



## Mobile X-Ray

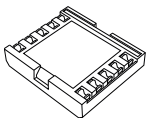
Get the Neurosurgery App\* to simulate fluoroscopy with Mobile X-Ray Technology to set your trajectory and navigate your instrument in real time.

*\*Attention: Mobile X-Ray module works on Apple Devices only.*



Neurosurgery  
App\*

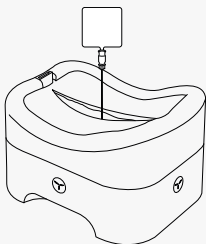
+



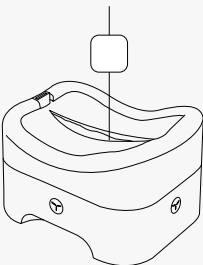
Mobile X-Ray  
Kit

### Possible ways to use it:

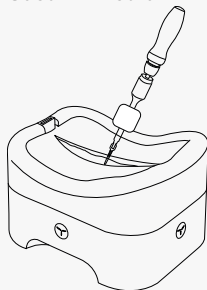
Spine needle



K-wire



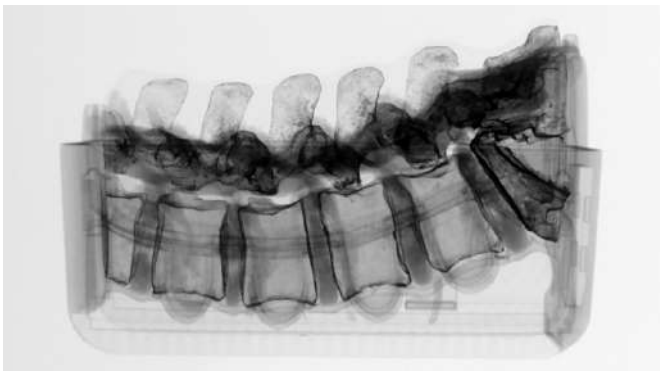
Custom Instrument



# Standard Imaging

Scan the box with X-Ray and CT to verify the level and visualize the positioning of the fixation implants\*.

\*The box is not designed for MRI; do not subject it to MRI scans as it contains metallic components.



# Navigation\*

Upload the CT scan on the navigator and start navigating the Box.

\* Check the compatibility of your Navigation System.  
Please contact us for a complete list of compatible systems and technologies.



# Disposable Parts

Designed to specifically mimic the properties of human tissues, such as softness, elasticity, and texture.



## OPEN AND MINIMALLY INVASIVE SKIN LEVEL





# What is included

- Posterior LumbarBox:
  - 1 Skin Level (Open or MIS)
  - 1 Spine Level
  - 1 Base
- Mobile X-Ray Kit
- Mobile Navigation Kit



# General warnings

**THIS PRODUCT CONTAINS METALS:  
DO NOT PUT IT INTO A MAGNETIC RESONANCE!**

- Adult assembly required
- Never leave children unattended with the box
- Never put hot liquids above the tools
- Never put chemical substances above the tools
- Wash with water, do not use chemical products
- Keep the product in a dry environment
- Keep the product away from any heat source
- Pay attention to your eyes when using

All materials used to produce UpSurgeOn products are certified, safe and non-toxic. Use of gloves, protective glasses and mask is always suggested to maintain the cleanliness of the simulator and the tools, and as a standard practice during each simulation. Wearing safety equipment is mandatory in the use of drilling simulation.



## Reach out to us

If you wish to acquire further information, please contact us at the following contact details according to your country of origin.

### Europe

excluding UK & Ireland

**UpSurgeOn**

upsurgeon.com  
info@upsurgeon.com

### USA, UK & Ireland

**Inovus Medical**

inovus.org  
info@inovus.org

### Mexico

**Aritmedica**

aritmedica.com.mx  
artimedica@artimedica.com.mx

### Brasil

**Spinetech**

spinetech.com.br  
mozart@spinetech.com.br

### Saudi Arabia

**Anfas Medical**

anfasmedical.com  
mabulaila@anfasmedical.com

### Hong Kong

**Montsmed**

montsmed.com  
timothykong@montsmedhk.com

### South Korea

**C.M. Blue**

cmblue.co.kr  
thjosephkim@cmblue.co.kr

### Rest of the world

**UpSurgeOn**

upsurgeon.com  
info@upsurgeon.com

## Follow UpSurgeOn

UpSurgeOn is a hi-tech company specialized in psychomotor skill augmentation in microsurgeries through the use of bleeding-edge virtual and physical simulation technologies.



Go to website [www.upsurgeon.com](http://www.upsurgeon.com)