

ThoracolumbarBox

10 Operable Levels
From T8 to S1



Features



Modularity

10 Operable Levels in 1 single simulator
Two disposable levels: Skin Level (Open and MIS version) + Spine Level



Mobile X-Ray*

Get the Neurosurgery App and simulate fluoroscopy using Mobile X-Ray Technology to set landmarks and plan your surgical approach.

**Attention: Mobile X-Ray module works on Apple Devices only.*



Standard X-Ray and CT Scan

The simulator is compatible with standard X-Ray, fluoroscopy and CT. Scan it and visualize the positioning of the fixation implants.



Compatible with Standard Navigation

Upload the MRI scan on the navigator and start navigating the Box.

**Contact us at support@upsurgeon.com to check the compatibility of your Navigation technology.*



Disposable Parts

Disposable levels are readily available, designed to be replaced for continual, repeatable, and sustainable enhancement of your skills.

How it is composed

SKIN LEVEL

Open Version: Reusable
MIS Version: Disposable



AR Marker slot

SPINE LEVEL (Disposable)

Registration Fiducials for Navigation*

Registration Fiducials for Navigation*

BASE (Reusable)

Attachment for Navigation* Tracker

Openings to access Fiducial Markers



* Check the compatibility of your Navigation System.
Please contact us for a complete list of compatible
systems and technologies.

The highest level of detail

PROCEDURES:

- **Posterior decompression and fixation** of the lower thoracic and lumbosacral segments
- **PLIF** (Posterior Lumbar Interbody Fusion)
- **TLIF** (Transforaminal Lateral Interbody Fusion)
- **Open and percutaneous approaches** (open reusable Skin Level and closed disposable Skin Level respectively)



SURGICAL CAPABILITIES:

- **Laminectomies and flavectomies**
10 (T8-L5)
- **Multiple discectomies**
Nerve root decompression through discectomies feasible from T8 to S1 (10 discectomies, T8-9, T9-10, T10-11, T11-12, T12-L1, L1-2, L2-3, L3-4, L4-5, L5-S1)
- **Multiple corpectomies**
Total corpectomy feasible from T8 to L5 (10 corpectomies)
- **Instrumented surgery**
Placement of any artificial disc and body, according to the above-mentioned levels (screws, disc cages, somatic cages)



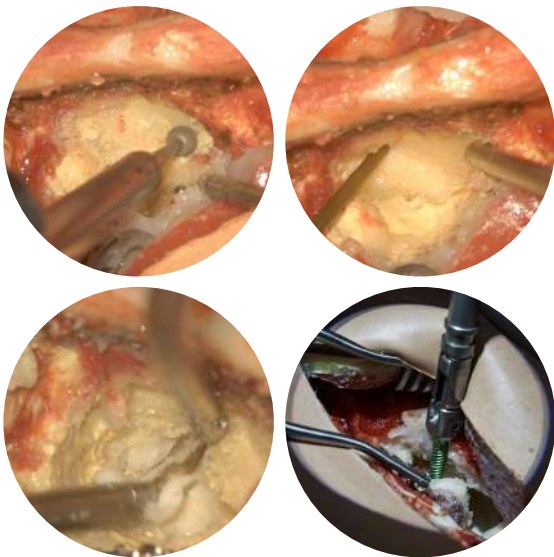
Surgical Realism



- 1. Ultra-accurate anatomy
- 2. Hyper-realistic materials

ANATOMY INCLUDED IN THIS APPROACH:

- Open and closed skin
- Paravertebral muscles
- Flavum Ligament PLL
(Posterior Longitudinal Ligament)
- Vertebrae from T8 to S1
- Discs from T8-9 to L5-S1
- Spinal cord
- Nerve roots
- Peridural fat



Mobile X-Ray

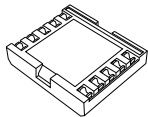
Get the Neurosurgery App* to simulate fluoroscopy with Mobile X-Ray Technology to set your trajectory and navigate your endoscope in real time.

**Attention: Mobile X-Ray module works on Apple Devices only.*



Neurosurgery App*

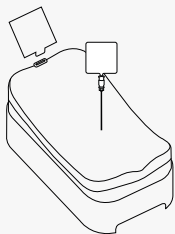
+



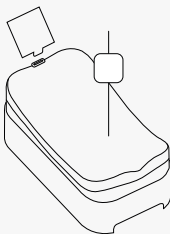
Mobile X-Ray Kit

Possible ways to use it:

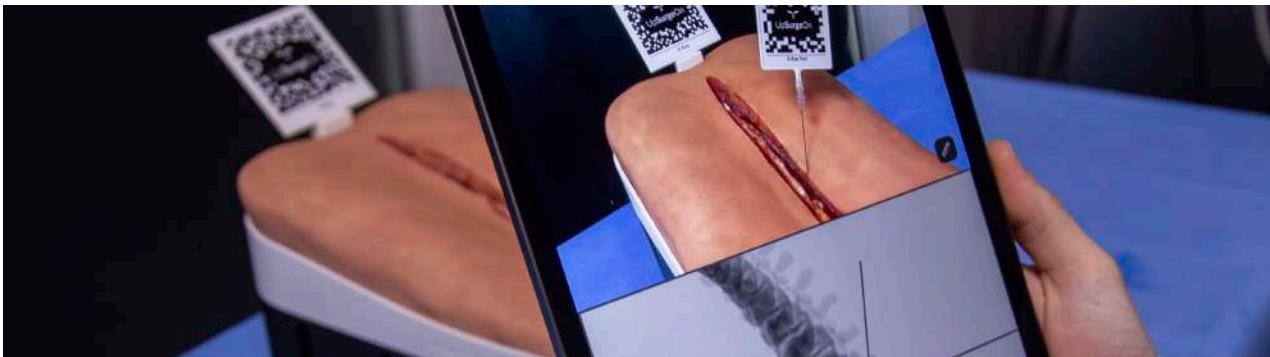
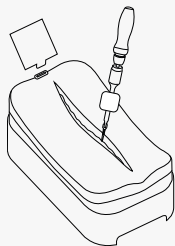
Spine needle



K-wire



Custom Instrument



Navigation*

Upload the CT scan on the navigator and start navigating the Box.

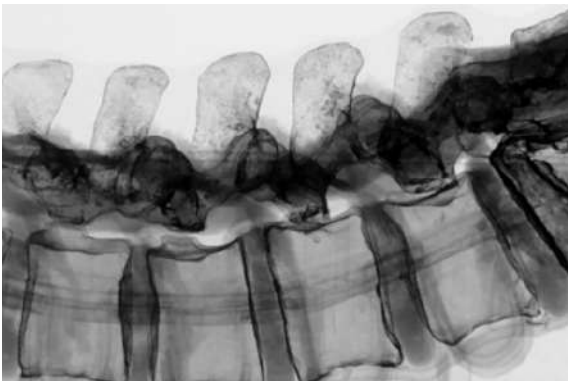
*Contact us at support@upsurgeon.com to check the compatibility of your Navigation technology.



Standard Imaging

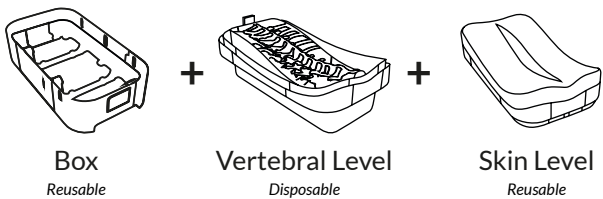
Scan the box with X-Ray and CT to verify the level and visualize the positioning of the fixation implants*.

*The box is not designed for MRI; do not subject it to MRI scans as it contains metallic components.



Disposable Parts

Designed to specifically mimic the properties of human tissues, such as softness, elasticity, and texture.



OPEN AND MINIMALLY INVASIVE SKIN LEVEL



What is included

- ThoracolumbarBox:
 - 1 Skin Level (Open or MIS)
 - 1 Spine Level
 - 1 Base
- Mobile X-Ray Kit



General warnings

**THIS PRODUCT CONTAINS METALS:
DO NOT PUT IT INTO A MAGNETIC RESONANCE!**

- Adult assembly required
- Never leave children unattended with the box
- Never put hot liquids above the tools
- Never put chemical substances above the tools
- Wash with water, do not use chemical products
- Keep the product in a dry environment
- Keep the product away from any heat source
- Pay attention to your eyes when using

All materials used to produce UpSurgeOn products are certified, safe and non-toxic. Use of gloves, protective glasses and mask is always suggested to maintain the cleanliness of the simulator and the tools, and as a standard practice during each simulation. Wearing safety equipment is mandatory in the use of drilling simulation.



Reach out to us

If you wish to acquire further information, please contact us at the following contact details according to your country of origin.

Europe

excluding UK & Ireland

UpSurgeOn

upsurgeon.com
info@upsurgeon.com

USA, UK & Ireland

Inovus Medical

inovus.org
info@inovus.org

Mexico

Aritmedica

aritmedica.com.mx
artimedica@artimedica.com.mx

Brasil

Spinetech

spinetech.com.br
mozart@spinetech.com.br

Saudi Arabia

Anfas Medical

anfasmedical.com
mabulaila@anfasmedical.com

Hong Kong

Montsmed

montsmed.com
timothykong@montsmedhk.com

South Korea

C.M. Blue

cmblue.co.kr
thjosephkim@cmblue.co.kr

Rest of the world

UpSurgeOn

upsurgeon.com
info@upsurgeon.com

Follow UpSurgeOn

UpSurgeOn is a hi-tech company specialized in psychomotor skill augmentation in microsurgeries through the use of bleeding-edge virtual and physical simulation technologies.



Go to website www.upsurgeon.com