

Endoscopic Posterior CervicalBox

Hyper-realistic Spinal Surgery Simulator for Posterior Approaches to the Cervical Spine

From C2-C6

Pathologies

Spondylotic Stenosis: 5 levels of posterior compression to be operated through posterior laminectomies (C2, C3, C4, C5, C6).

Features



Modularity

6 Operable Levels in 1 single simulator
Disposable Skin Level & Spine Level



Surgical Realism

The most realistic simulator for posterior cervical approach



Water Management

Endoscopic Posterior CervicalBox is designed to manage high irrigation flows through an integrated water collection system.



Mobile X-Ray*

Get the Neurosurgery App and simulate fluoroscopy using Mobile X-Ray Technology to set landmarks and plan your surgical approach.

*Attention: Mobile X-Ray module works on Apple Devices only.



Standard X-Ray and CT Scan

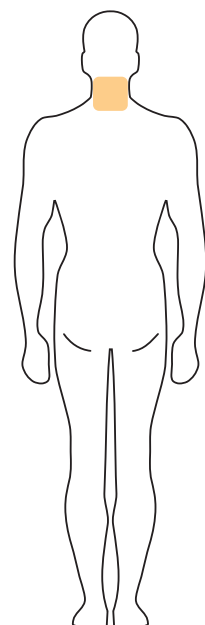
The simulator is compatible with standard X-Ray, fluoroscopy and CT. Scan it and visualize the positioning of the fixation implants.



Compatible with Standard Navigation

Upload the MRI scan on the navigator and start navigating the Box.

*Contact us at support@upsurgeon.com to check the compatibility of your Navigation technology.



How it is composed

Black Frame
Reusable



Skin Level
Disposable



Patient Positioning Tag
Reference to locate patient's head and feet on Skin Level



Spine Level
Disposable



Patient Positioning Tag
Reference to locate patient's head and feet on Spine Level



Black Box
Reusable

White Base
Reusable



User Guide QR Code
Scan for Tutorials & Documentation



Water Collection Base
Reusable

The highest level of detail

PROCEDURES:

Multilevel posterior decompressions for spondylotic myelopathy

- Five levels of compressive pathology (C2 to C6) ideal for posterior decompression techniques.
- Trainees can practice multilevel posterior laminectomies to relieve spinal cord pressure.

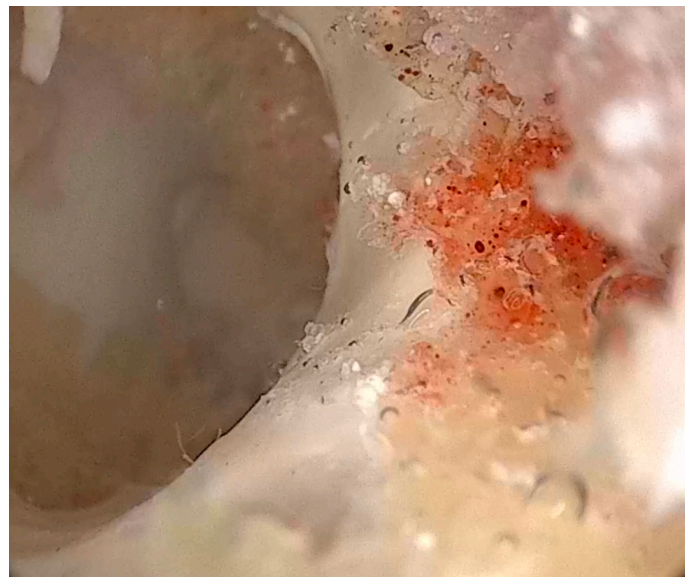
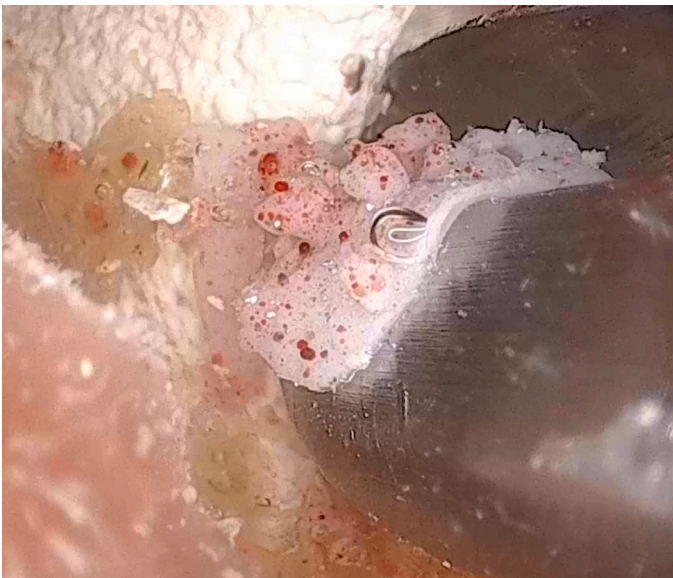
SURGICAL CAPABILITIES:

- **Laminectomies, laminoplasties, flavectomies, endo fusion:**

Master posterior cervical decompression techniques across five vertebral levels (C2 to C6), ideal for developing skills in cervical spine myelopathy treatment.

- **Instrumented Surgery Training:**

Practice placing posterior cervical implants, including screws, artificial discs, and somatic cages. This comprehensive approach covers multilevel fixation and cervical spine stabilization techniques for advanced surgical training.



Surgical Realism



ODORLESS



NON-PERISHABLE

1. Ultra-accurate anatomy
2. Hyper-realistic materials

ANATOMY INCLUDED IN THIS APPROACH:

- Skin
- Vertebral bodies from C2 to C6
- Intersomatic discs from C2 to C6
- Paravertebral muscles
- Vertebral arteries
- PLL (Posterior Longitudinal Ligament)
- Spinal cord
- Peridural fat



Mobile X-Ray

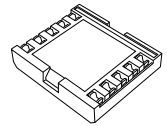
Get the Neurosurgery App* to simulate fluoroscopy with Mobile X-Ray Technology to set your trajectory and navigate your endoscope or any other tubular instrument in real time.

*Attention: Mobile X-Ray module works on Apple Devices only.

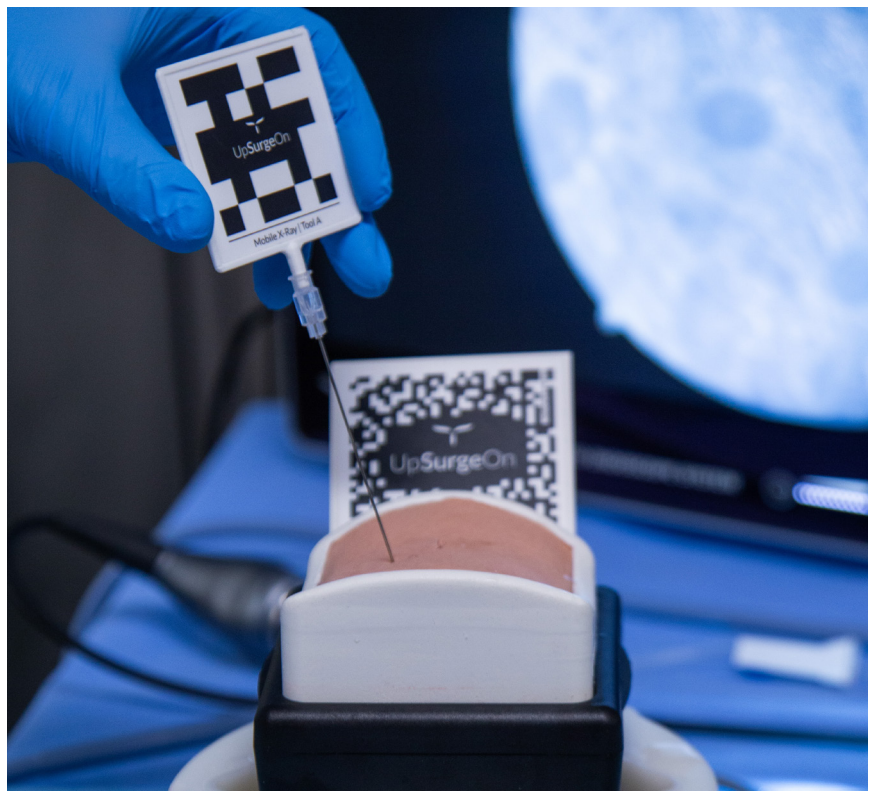
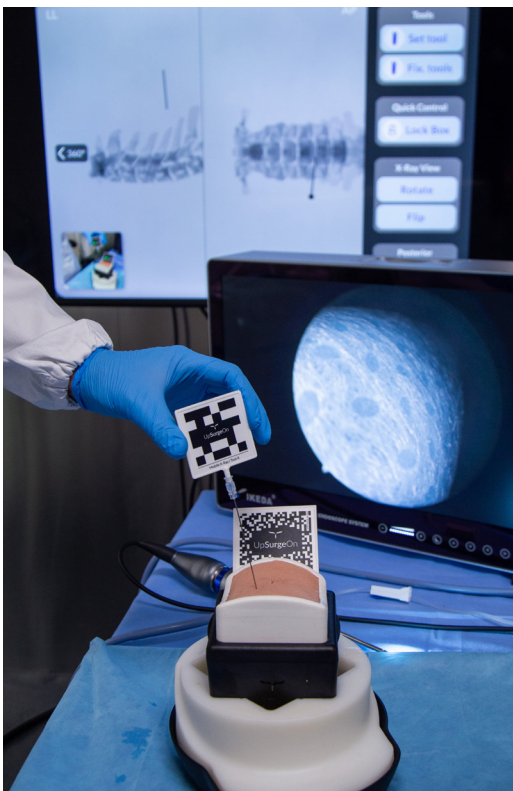


**Neurosurgery
App***

+



**Mobile X-Ray
Kit**



Standard imaging

Scan the box with X-Ray and CT to verify the level and visualize the positioning of the fixation implants*.

*The box is not designed for MRI; do not subject it to MRI scans as it contains metallic components.

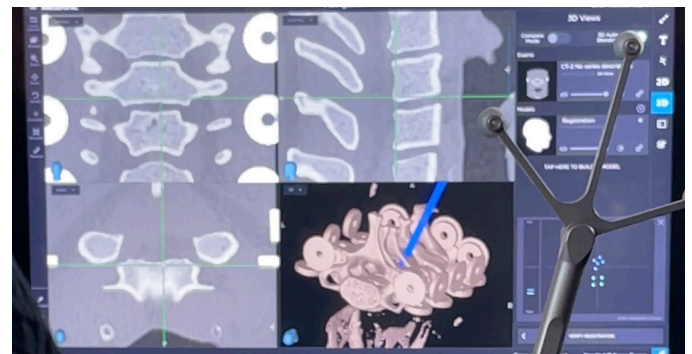


Navigation

Upload the CT scan on the navigator and start navigating the Box.

*Contact us at support@upsurgeon.com to check the compatibility of your Navigation technology.

Please note: The NavigationFrame is not included.



Disposable Parts

Designed to specifically mimic the properties of human tissues, such as softness, elasticity, and texture.



Skin Level



Spine Level

What is included

- 1x Workstation:
Water Collection Base, Black Box, Black Frame, White Base, Outflow tube
- 1x Skin Level
- 1x Spine Level
- Mobile X-Ray Kit
- Waterproof bag for product storage
- USB with MRIs for Navigation
- Quick Start Guide for Endoscopic Series

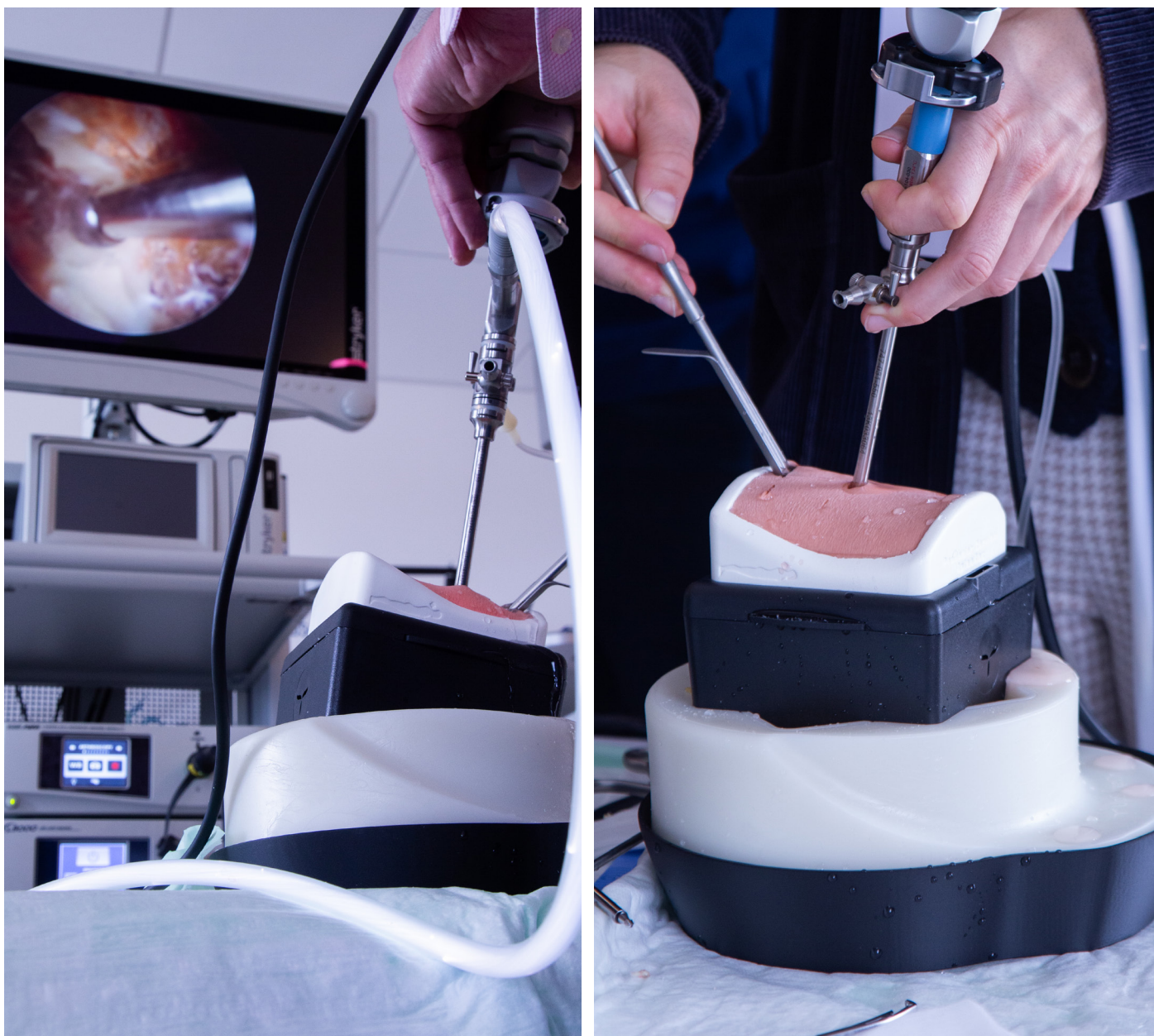


General warnings

THIS PRODUCT CONTAINS METAL MAGNETS: DO NOT PUT IT INTO A MAGNETIC RESONANCE SCANNER AND DO NOT USE IT WITH ANY MACHINE THAT WORK WITH ELECTROMAGNETS

- Adult assembly required
- Never leave children unattended with the box
- Never put hot liquids above the tools
- Never put chemical substances above the tools
- Wash with water, do not use chemical products
- Keep the product away from any heat source

All materials used to produce UpSurgeOn products are certified, safe and non-toxic. Use of gloves, protective glasses and mask is always suggested to maintain the cleanliness of the simulator and the tools, and as a standard practice during each simulation. Wearing safety equipment is mandatory in the use of drilling simulation.



Reach out to us

If you wish to acquire further information, please contact us at the following contact details according to your country of origin.

Europe

excluding UK & Ireland

UpSurgeOn

upsurgeon.com

info@upsurgeon.com

USA, UK & Ireland

Inovus Medical

inovus.org

info@inovus.org

Mexico

Artimedica

artimedica.com.mx

artimedica@artimedica.com.mx

Brasil

Spinetech

spinetech.com.br

mozart@spinetech.com.br

Hong Kong

Montsmed

monstmed.com

timothykong@montsmedhk.com

South Korea

C.M. Blue

cmblue.co.kr

thjosephkim@cmblue.co.kr

Rest of the world

UpSurgeOn

upsurgeon.com

info@upsurgeon.com

Follow UpSurgeOn

UpSurgeOn is a hi-tech company specialized in psychomotor skill augmentation in microsurgeries through the use of bleeding-edge virtual and physical simulation technologies.



Go to website www.upsurgeon.com