

# HystAR

Accessible | Affordable | Functional



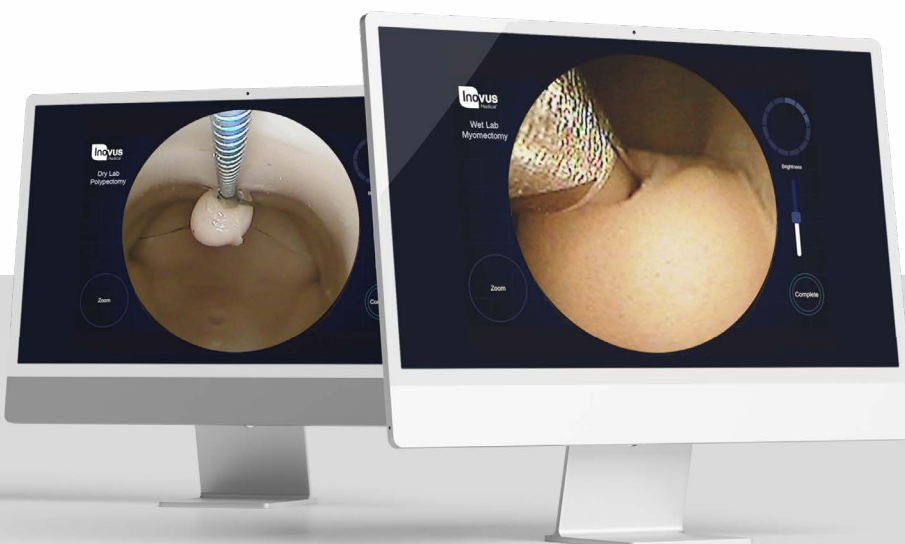
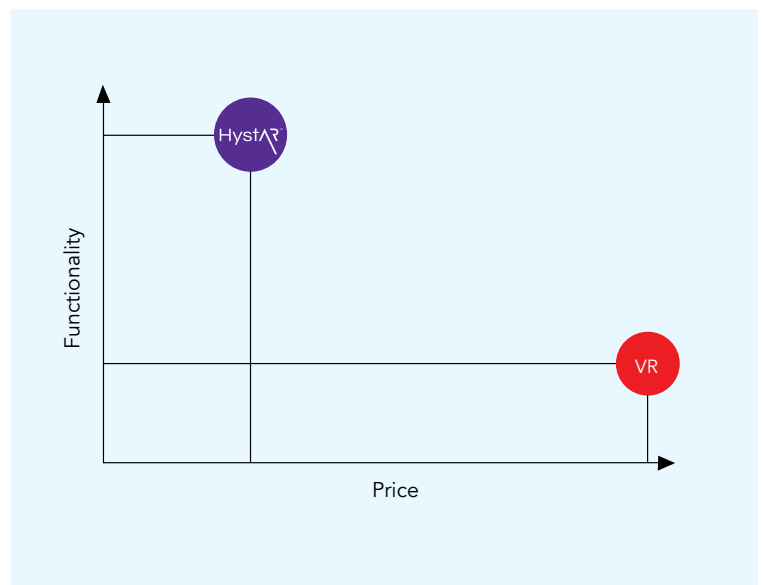
# HystAR Democratising high fidelity hysteroscopy simulation

The HystAR simulator includes dry lab and wet lab uterus models. All models are anatomically correct including vaginal vault, cervix and intrauterine landmarks. The dry lab models have interchangeable pathologies for practising diagnosis and intraoperative management. Dry lab pathologies include endometrial polyps, intrauterine adhesions and fibroids. The pathologies offer real to life tissue handling and are a low-cost way of delivering repeated practice of these core hysteroscopic skills.

The wet lab models include polyps, fibroids and a model for endometrial resection. The wet lab pathologies are made from Inovus' proprietary water based substrate and produce natural haptics when operating with a range of hysteroscopic devices such as morcellators and resectoscopes. Both types of uterus model can be positioned in an anteverted and retroverted orientation allowing trainees to experience the different approach needed for each.

## Key features of HystAR

- Soft tissue models with full anatomy including vaginal vault, cervix and uterine landmarks
- Full procedure simulation including polypectomy, myomectomy and adhesiolysis
- Track training events and performance on Totum
- Soft tissue models generate natural haptics
- Learn safe use of real instruments including morcellators and energy devices
- Objective feedback on key metrics of surgical performance. Record and review training progress with Totum



Full procedure simulation across dry lab and wet lab procedures.

# HystAR Pro

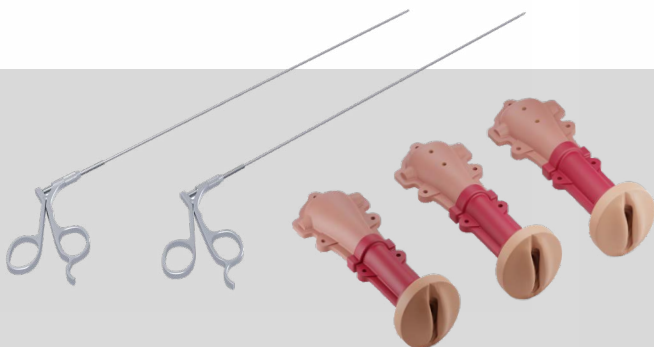
The HystAR Pro offers educational institutions and device companies the opportunity to deliver high fidelity, fully tracked hysteroscopy simulation at a scale never before possible. The sleek, compact trolley system meets all hysteroscopy training requirements from delivering basic, intermediate,

and advanced hysteroscopy skills courses in simulation centres through to pre-operative warm up in the clinical setting. Unlimited user licences mean there is no limit to the number of surgeons that can be trained with HystAR Pro.

## Included in the package:

- 1 x Uterus mounting case and table mount
- 1 x clamp for fixing uterus mounting case and table mount
- 1 x hysteroscopic scissors
- 1 x hysteroscopic biopsy forceps
- 3 x non pathological uterus models (INO-UT-01)
- 5 x pack of adhesions
- 5 x pack of polyps
- 1 x bottle of lubricant
- 1 x Mobile trolley system with adjustable operating height and integrated fibreoptic light source
- 1 x Integrated computer with Totum software pre-installed
- 1 x 22" touch screen monitor
- 1 x 4mm, 0° or 30° hysteroscope (depending on centre preference)
- 1 x hysteroscope introducer
- 1 x endoscopic camera
- 1 x light lead
- 1 x monitor stand
- 1 x operating stool for seated procedures
- Admin access to Totum

Product code: 00001482



# HystAR

The table top version of the HystAR facilitates high fidelity hysteroscopy skills training without boundaries. The official simulator of the GCH and AAGL.

The simulator includes dry lab and wet lab training modules. All uterus models are anatomically correct including vaginal vault, cervix and intrauterine landmarks.

The dry lab models have interchangeable pathologies for practising diagnosis and intraoperative management of polyps, intrauterine adhesions and fibroids.

The pathologies produce natural haptic feedback and are a low-cost way of delivering repeated practice of these core hysteroscopic skills. The simulator must be connected to a laptop or PC with the Totum software downloaded to complete these training modules.

Performance data is captured and displayed in Totum and can be downloaded and added to surgical training portfolios and logbooks.

## Included in the package:

- 1 x Uterus mounting case and table mount
- 1 x clamp for fixing uterus mounting case and table mount
- 1 x hysteroscopic scissors
- 1 x hysteroscopic biopsy forceps
- 2 x non pathological uterus models (INO-UT-01)
- 1 x fibroid uterus (dry lab)
- 1 x pack of adhesions (dry lab)
- 1 x pack of polyps (dry lab)
- 1 x bottle of lubricant
- 1 x 4mm, 0° or 30° hysteroscope (depending on centre preference)
- 1 x hysteroscope sheath
- 1 x endoscopic camera
- 1 x light lead
- 1 x USB powered light source
- 1 x Wheeled carry case

Product code: 00001290

\*Laptop not included





• Uterus base unit and stand



• Bozzini light source



• Hysteroscopic grasping forceps and scissors



• Camera



• Hysteroscopic introducer and scope



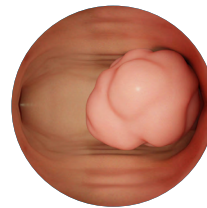
• Uterus models



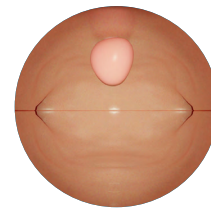
• Polyps and adhesions



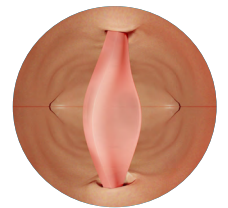
Internal views of pathologies



Close to life pathologies



Resection of polyps



Resection of adhesions



- Outer soft shell wheeled carry case containing the following inner cases:
  - Inner case to house HystAR components and camera
  - Camera case
  - Instrument case
  - Scope and introducer case

# Totum Connect to perfect surgical technique

HystAR simulators are powered by Totum, the holistic platform that creates a connected surgical training ecosystem.

Totum allows instrument motions to be mapped and recorded digitally, to generate rich objective

data on surgical performance. The objective data is aggregated, managed and shared with trainers via the Totum web portal.



HystAR  
Powered by

**TOTUM**



#### **Guiding the way to surgical success**

Connect with mentors, peers, and examiners to share best practice



#### **Harnessing the power of data to transform surgical training**

Objective performance metrics guide improvements in surgical technique and operative flow



#### **Unlocking the power of practice**

Video capture and debrief provides an ecosystem for review, refinement, and mastery of surgical procedures



#### **Dynamic assessment, universal recognition**

Issue certificates of competency, gain CPD/CME points for time spent training, perform work based assessments and OSATS

**TOTUM**

To learn more about the complete Totum ecosystem of connected surgical training, go to [www.inovus.org](http://www.inovus.org)



## Surgical Training Remastered

---

Global Headquarters  
St Helens, United Kingdom  
E: [info@inovus.org](mailto:info@inovus.org)  
T: +44 (0)1744 752 952  
www: [inovus.org](http://inovus.org)

USA Headquarters  
Tampa, Florida USA  
E: [info@inovus.org](mailto:info@inovus.org)  
T: 512 481 7691  
www: [inovus.org](http://inovus.org)

