



Accessible | Affordable | Functional



HystAR™

Setup Manual



- 1 | Begin by placing the U-shaped bracket on a suitable flat surface.



- 2 | Place the top portion of the small clamp through the opening at the front of the bracket, as illustrated.



- 3 | Place the retaining case onto the U-shaped bracket as shown.



- 4 | You are now ready to place a uterus model inside the case. Hook the loops of the model onto the internal fixings so that it is held securely in place.



6 | The bozzini jig is now ready for use.



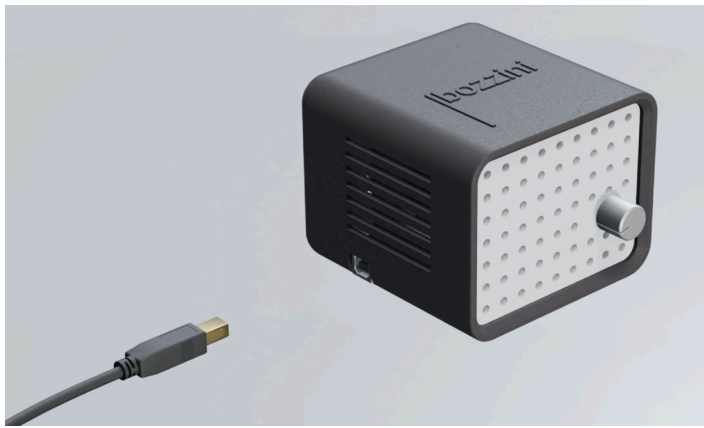
7 | Unpack the camera and uncoil the cable.



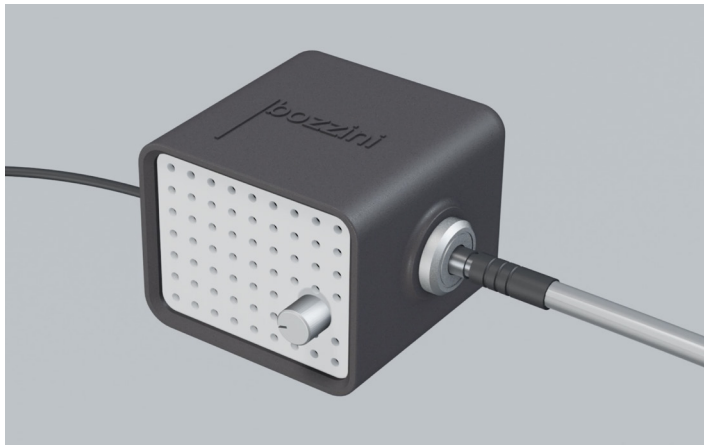
8 | Insert the USB connector into your laptop you may require use of a USB-C adaptor which is provided.



9 | Insert the light source lead into the laptop as shown.



10 | Connecting the other end to the light source itself.



11 | Plug in the male end of the fiberoptic cable into the light source box.



12 | Remove the introducer from the packaging.



13 | Ensure the introducer is placed inside of the sheath as illustrated here. Rotate the latch in a clockwise direction to ensure the two components are securely connected.



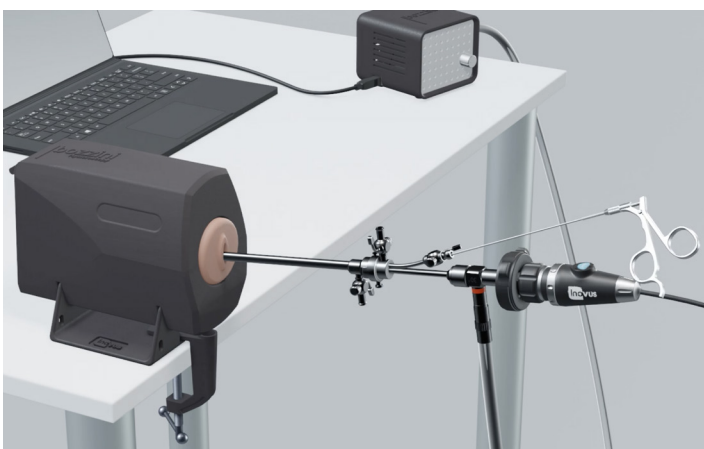
14 | You are now ready to insert the scope into the introducer. Once the scope is fully inside, ensure it is locked in place using the latch. You may use the apertures in the U-shaped bracket to hold the assembly in place as shown here.



15 | Connect the endoscopic camera to the scope by pinching the two clasps.



16 | Attach the other end of the fibreoptic cable to the connector on the scope by screwing it in place. At this stage, you are ready to turn the light source on.



17 | Set up is now complete and you are ready to power up your laptop.



e: info@inovus.org
t: +44 (0)1744 752 952
w: www.inovus.org



[@inovusmedical](https://www.instagram.com/inovusmedical)

All products contained in this catalogue are Copyright Inovus Ltd 2023
Full price list available on request: info@inovus.org
Full warranty details can be found on www.inovus.org