

Procedural skills training

Powered by

TOTUM[®]

Accessible | Affordable | Functional



Adding your mobile to the intraoperative view.

The following steps will allow you to add your mobile app view to the intraoperative screen in Totum to enhance your training experience.

You will require the mirror screen hardware

Product code: 00001268

USB Cable USB A - USB B Light Sorce

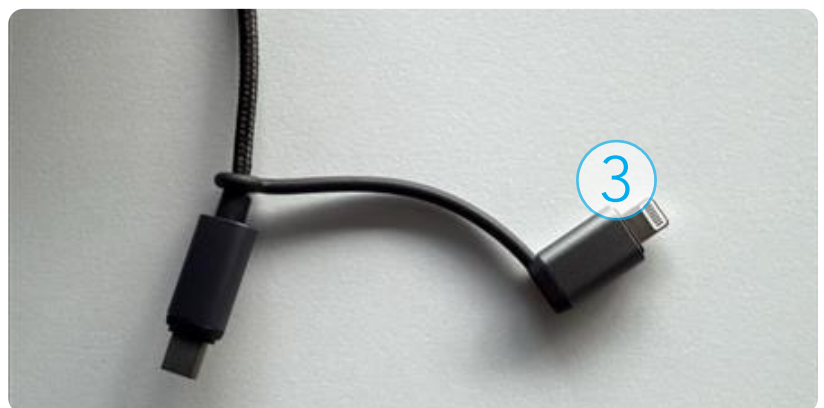
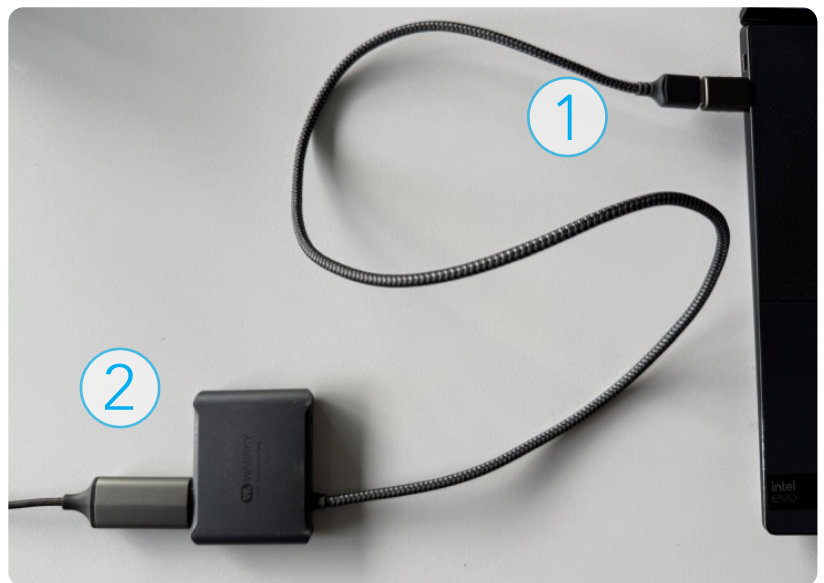
Product code: 00002401

WARRKY 4K Loop Out Video Capture Card

This can be used in conjunction with the UpSurgeOn Mobile Xray app (found on your mobile app store) and the UpSurgeOn simulators.

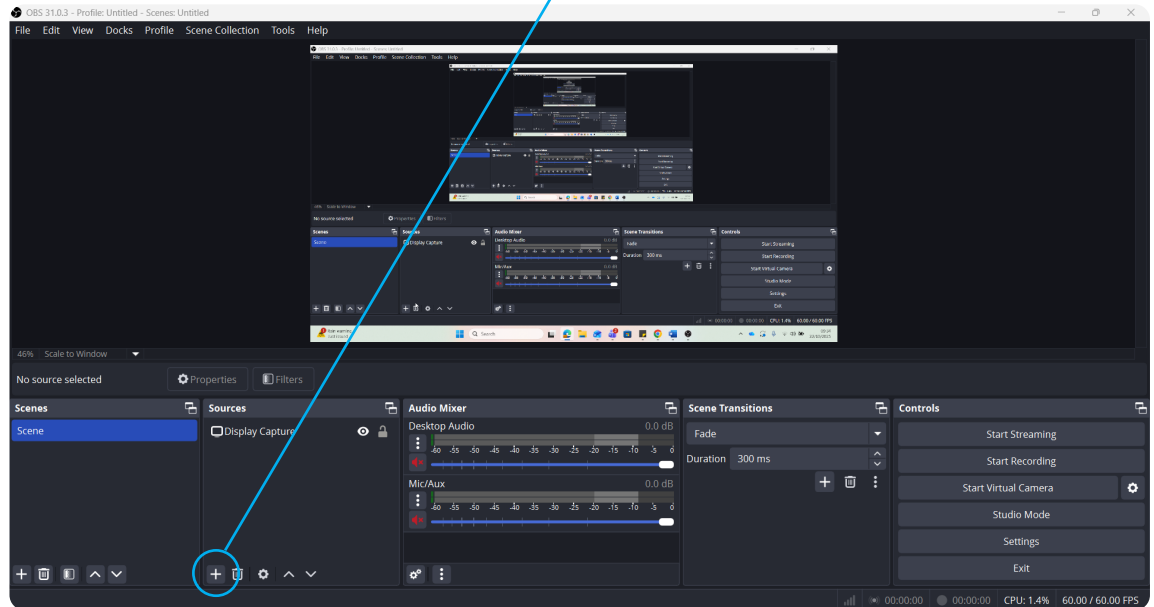
Hardware Setup

- ① Plug the USB capture card into the USB or USB-c port on your laptop or LapAR Pro system.
- ② Plug the HDMI lead into the available slot in the capture card.
- ③ Plug your phone into the USB-C or lightning cable

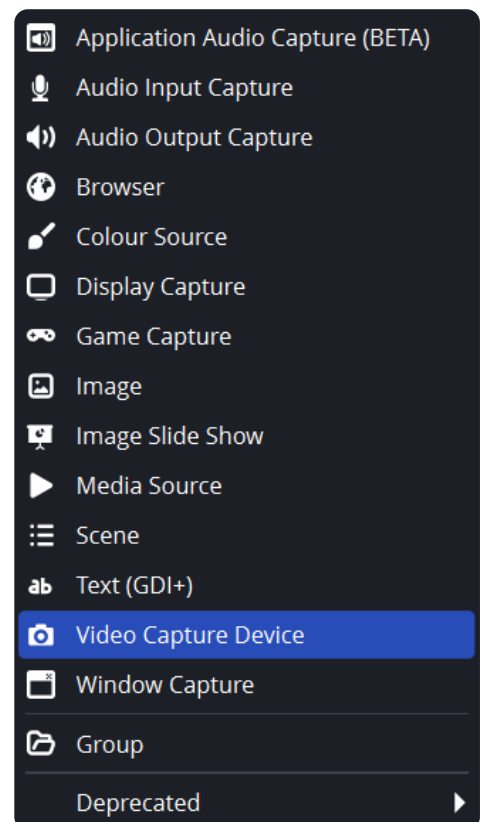


Software setup

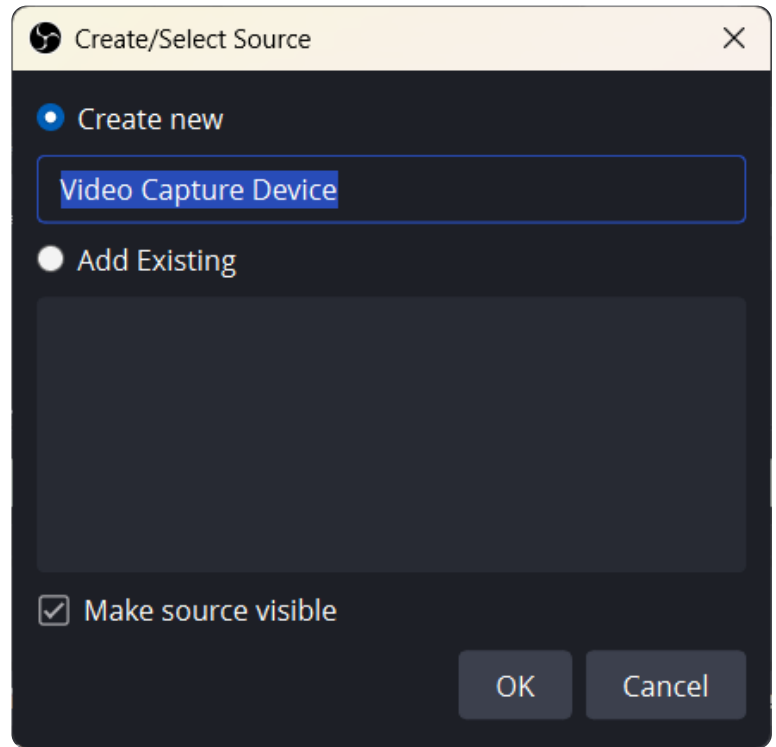
- 1) Go to [Download | OBS](#) and download OBS Studio to your desktop.
- 2) Once downloaded, open the program and click on the + sign shown here.



- 3) Click the "Video Capture Device" option.



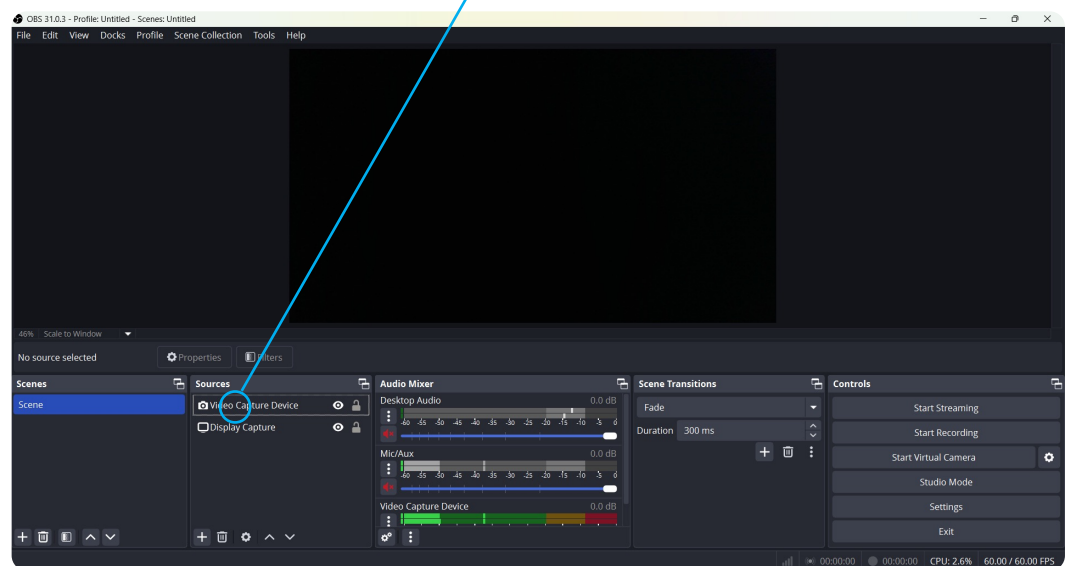
4) Edit the name if you wish, and click "Ok".



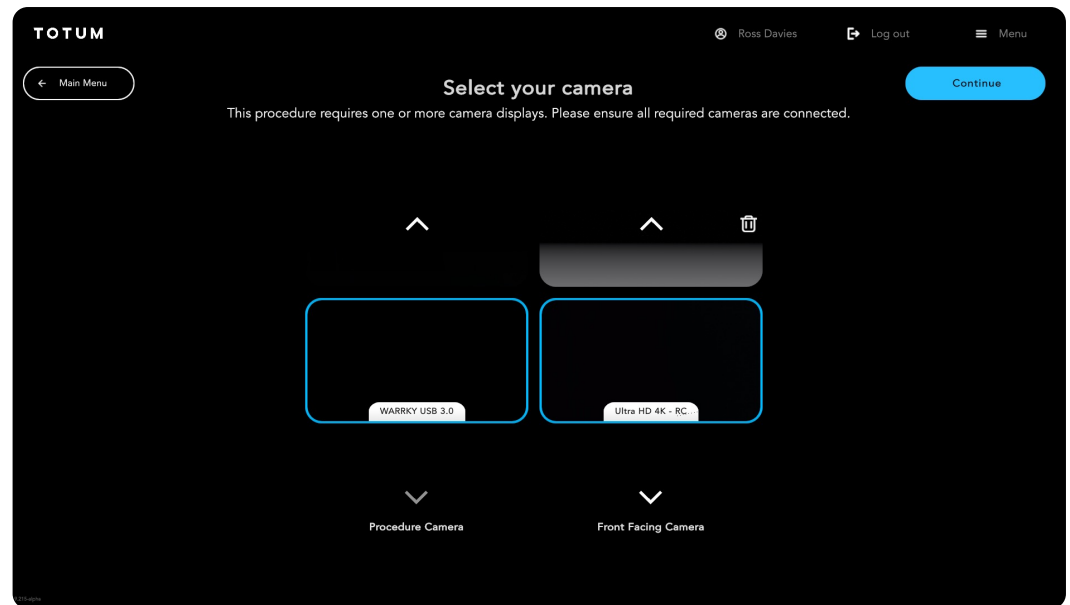
5) Select the Device to add.



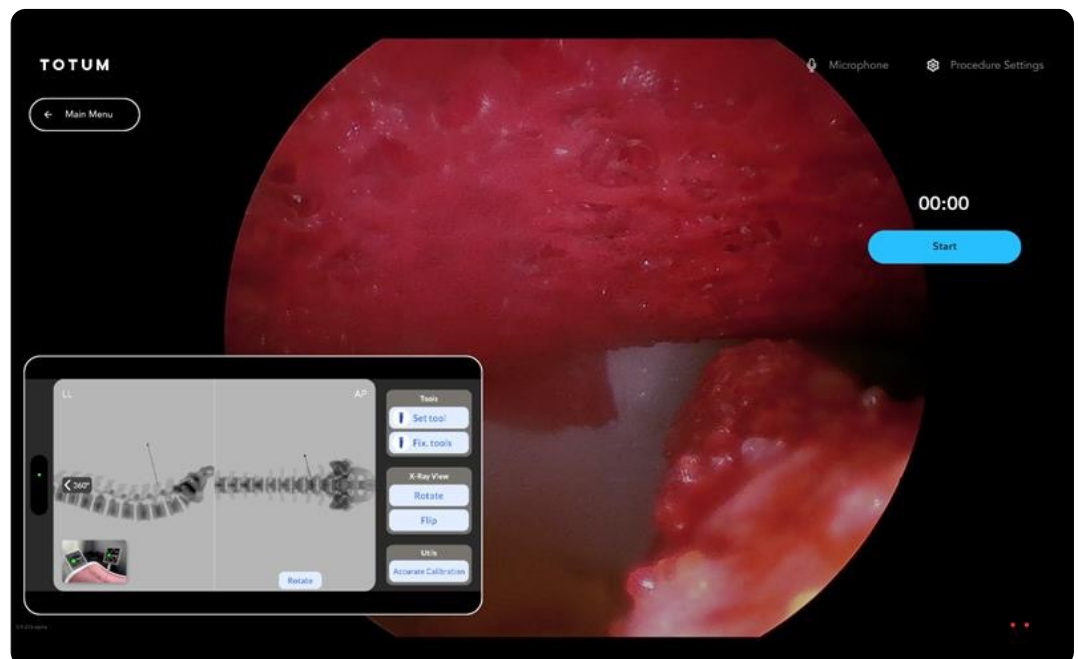
6) The device is now added and saved, you will not need to do this again.



7) You can now select the device within the camera select menu in Totum.



8) View your additional camera or app within the intraoperative screen.





Surgical Training Remastered

Global Headquarters
St Helens, United Kingdom
E: info@inovus.org
T: +44 (0)1744 752 952
www.inovus.org

USA Headquarters
Tampa, Florida USA
E: info@inovus.org
T: 512 481 7691
www.inovus.org



@inovusmedical