

OccipitocervicalBox

Hyper-realistic Spinal Surgery Simulator for Posterior Approaches to the occipitocervical Spine

From C0-T3

Spondylotic Stenosis: posterior compression to be operated through posterior laminectomies; any type of occipito cervical fixations.

Features



Modularity

Operable Levels from C0 to T3
Disposable Spine Level + Disposable Skin Level



Surgical Realism

The most realistic simulator for posterior cervical approach



Mobile X-Ray*

Get the Neurosurgery App and simulate fluoroscopy using Mobile X-Ray Technology to set landmarks and plan your surgical approach.

*Attention: Mobile X-Ray module works on Apple Devices only.



Standard X-Ray and CT Scan

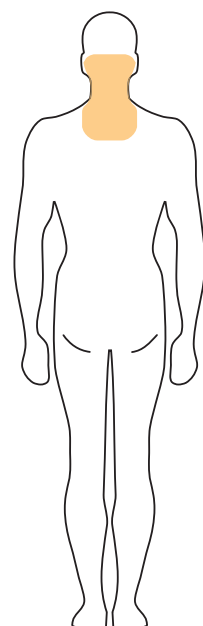
The simulator is compatible with standard X-Ray, fluoroscopy and CT. Scan it and visualize the positioning of the fixation implants.



Compatible with Standard Navigation

Upload the MRI scan on the navigator and start navigating the Box.

*Contact us at support@upsurgeon.com to check the compatibility of your Navigation technology.



How it is composed



Black Frame
Reusable

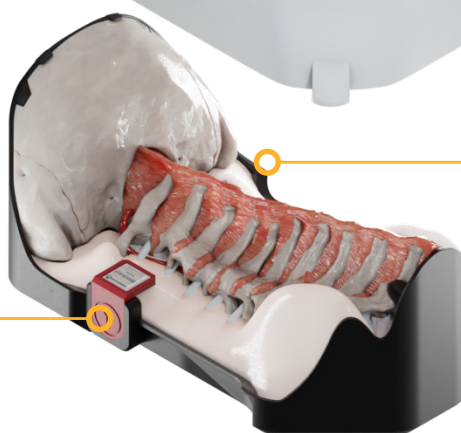


Patient Positioning Tag
Reference to locate patient's head and feet

Spine Level
Reusable



Spine Level Tag
To identify the Spine Level



Spine Level
Disposable



User Guide QR Code
Scan for Tutorials & Documentation



Patient Positioning Tag
Reference to locate patient's head and feet



Black Base
Reusable

The highest level of detail

PROCEDURES:

Multilevel posterior decompressions for spondylotic myelopathy through:

- Posterior Laminectomies from C0 to T3 (10 laminectomies)
- Posterior Laminoplasties from C0 to T3 (10 laminoplasties)
- Any type of Occipito fixations

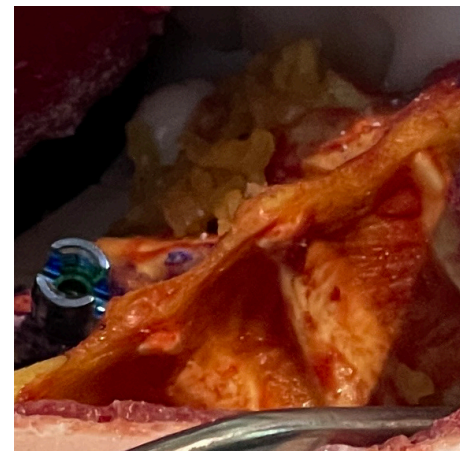
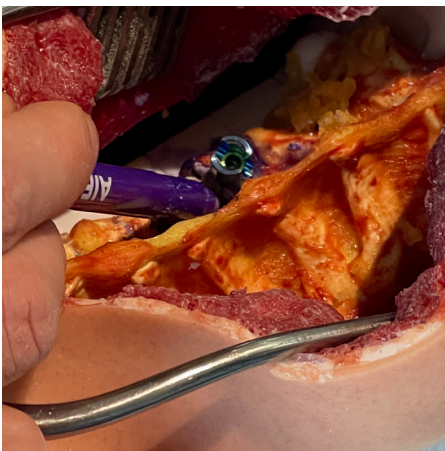
SURGICAL CAPABILITIES:

- **Laminectomies, laminoplasties, flavectomies and fixations**
C0-T3

- **Instrumented surgery**
Placement of screws and any other type of posterior cervical fixation, according to the above-mentioned levels

- **Instrumented surgery**

Placement of any artificial disc and body, according to the above-mentioned levels (disc cage, somatic cage, anterior plates, somatic screws)



Surgical Realism



ODORLESS



NON-PERISHABLE

1. Ultra-accurate anatomy
2. Hyper-realistic materials

ANATOMY INCLUDED IN THIS APPROACH:

- Occipital Bone
- Mastoid Processes
- Atlas
- Vertebrae from C1 to T3
- Vertebral Artery
- Spinal Cord
- Nerve roots
- Ligament



Mobile X-Ray

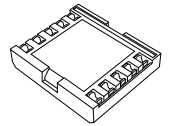
Get the Neurosurgery App* to simulate fluoroscopy with Mobile X-Ray Technology to set your trajectory and navigate your endoscope or any other tubular instrument in real time.

*Attention: Mobile X-Ray module works on Apple Devices only.



**Neurosurgery
App***

+



**Mobile X-Ray
Kit**



Standard imaging

Scan the box with X-Ray and CT to verify the level and visualize the positioning of the fixation implants*.

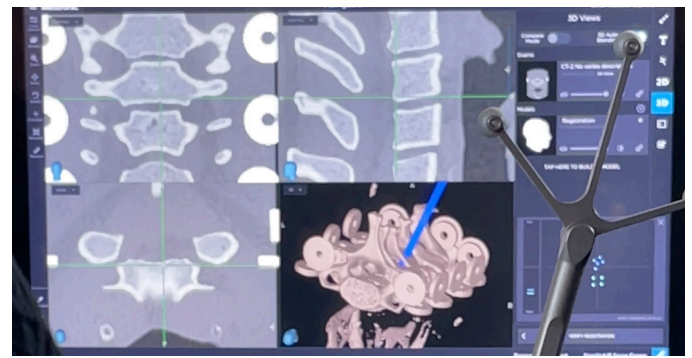
*The box is not designed for MRI; do not subject it to MRI scans as it contains metallic components.

Navigation

Upload the CT scan on the navigator and start navigating the Box.

*Contact us at support@upsurgeon.com to check the compatibility of your Navigation technology.

Please note: The NavigationFrame is not included.

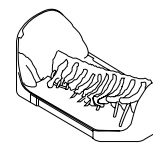


Disposable Parts

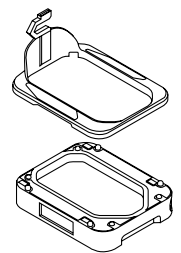
Designed to specifically mimic the properties of human tissues, such as softness, elasticity, and texture.



Skin Level
Reusable



Spine Level
Disposable

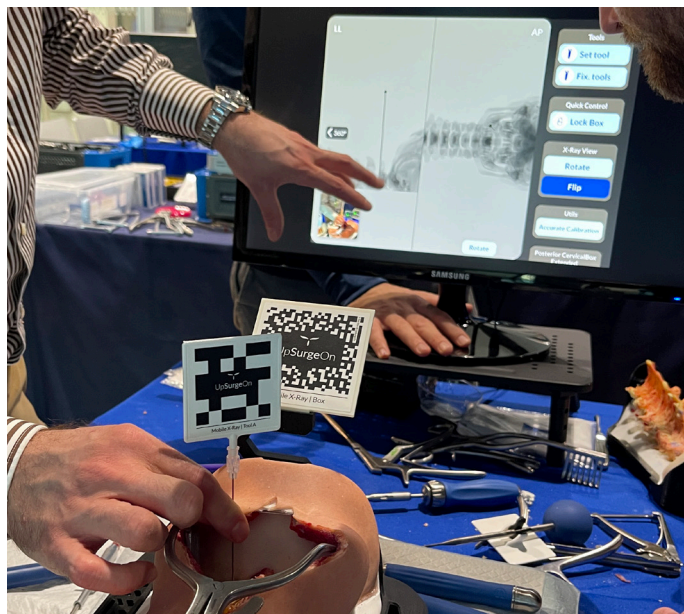
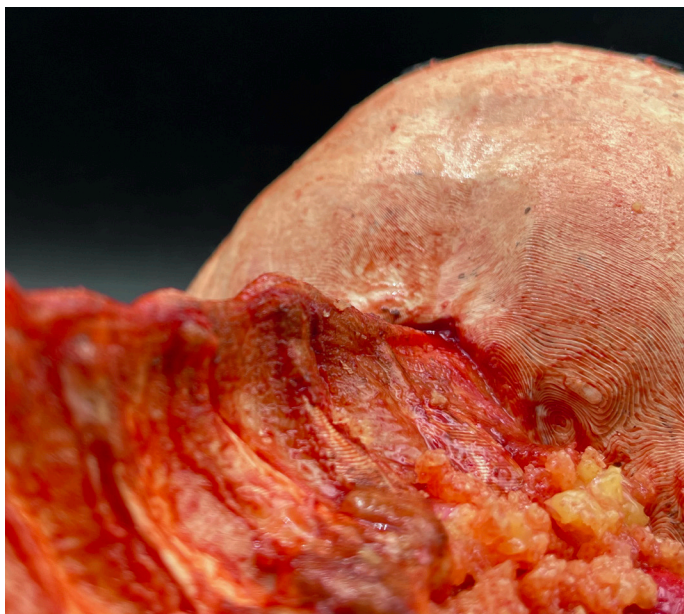


Workstation
Reusable

What is included

- 1x Workstation
Black Base, Black Frame, DRB Support, ARMarker Support
- 1x Skin Level
- 1x Spine Level
- Mobile X-Ray Kit
- USB with MRIs for Navigation
- Lubricant





General warnings

THIS PRODUCT CONTAINS METAL MAGNETS: DO NOT PUT IT INTO A MAGNETIC RESONANCE SCANNER AND DO NOT USE IT WITH ANY MACHINE THAT WORK WITH ELECTROMAGNETS

- Adult assembly required
- Never leave children unattended with the box
- Never put hot liquids above the tools
- Never put chemical substances above the tools
- Wash with water, do not use chemical products
- Keep the product away from any heat source

All materials used to produce UpSurgeOn products are certified, safe and non-toxic. Use of gloves, protective glasses and mask is always suggested to maintain the cleanliness of the simulator and the tools, and as a standard practice during each simulation. Wearing safety equipment is mandatory in the use of drilling simulation.

Reach out to us

If you wish to acquire further information, please contact us at the following contact details according to your country of origin.

Europe

excluding UK & Ireland

UpSurgeOn

upsurgeon.com

info@upsurgeon.com

USA, UK & Ireland

Inovus Medical

inovus.org

info@inovus.org

Mexico

Artimedica

artimedica.com.mx

artimedica@artimedica.com.mx

Brasil

Spinetech

spinetech.com.br

mozart@spinetech.com.br

Hong Kong

Montsmed

monstmed.com

timothykong@montsmedhk.com

South Korea

C.M. Blue

cmblue.co.kr

thjosephkim@cmblue.co.kr

Rest of the world

UpSurgeOn

upsurgeon.com

info@upsurgeon.com

Follow UpSurgeOn

UpSurgeOn is a hi-tech company specialized in psychomotor skill augmentation in microsurgeries through the use of bleeding-edge virtual and physical simulation technologies.



Go to website www.upsurgeon.com