



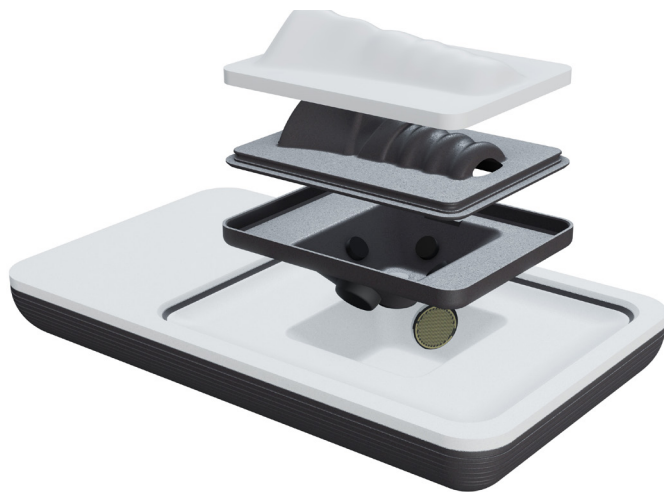
Accessible | Affordable | Functional



Sellick Setup Manual



- 1 | Open the box and remove the base unit, neck section and wires.



- 2 | Place the neck section into the recess in the base unit. Make sure the thyrod end of the neck section points towards the power input end of the device.



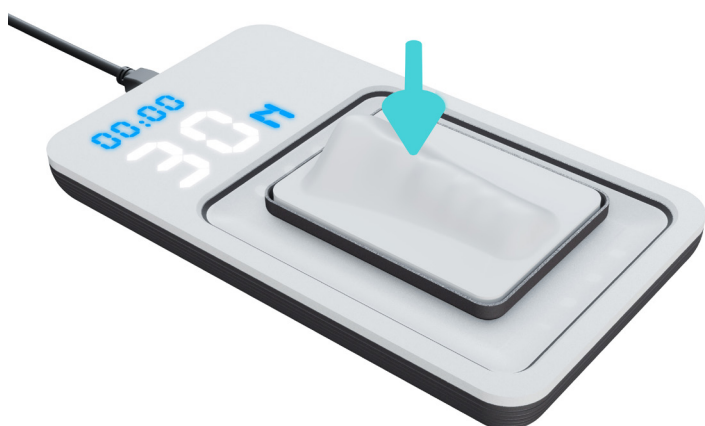
- 3 | Ensure the sellick® is placed on a desk or table top and then insert the USB power source.



- 4 | Once plugged into the power the display lights should show up. If numbers do not appear, press down once on the neck section to re-set the device.



- 5 | Press down on the neck section and pressure (Newtons) will read out in real time.



- 6 | The timer starts with pressure and stops on release. To re-set the timer push down and release the neck section once.



- 7 | Excess cricoid pressure over 35N will cause flashing red lights to appear.



- 8 | Lateral and rostral pressure is indicated by constant blue lights.



e: info@inovus.org
t: +44 (0)1744 752 952
w: www.inovus.org



[@inovusmedical](https://www.instagram.com/inovusmedical)

All products contained in this catalogue are Copyright Inovus Ltd 2023
Full price list available on request: info@inovus.org
Full warranty details can be found on www.inovus.org