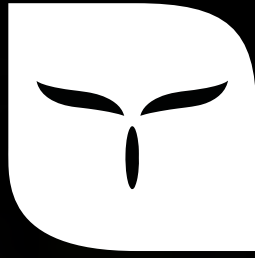


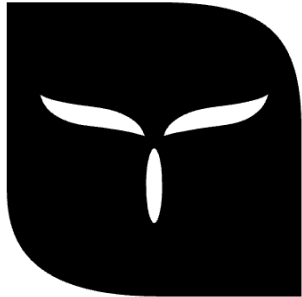
# SpineHUB



A Collaborative **Technology** by



# SpineHUB



A Collaborative **Technology** by



SpineHUB is the result of a powerful collaboration between UpSurgeOn and Inovus Medical—merging the most advanced simulation and imaging technologies to create a fully integrated training platform for endoscopic spine surgery.

**Dual Anatomical Modules:** Seamlessly switch between UpSurgeOn's Endoscopic LumbarBox Extended and Endoscopic Posterior CervicalBox simulators to perform complete endoscopic lumbar and cervical procedures in a single session.

**Integrated Mobile X-Ray:** Train with UpSurgeOn's built-in Mobile X-Ray system to master image-guided techniques— without needing access to an OR suite.



**Integrated Imaging System:** The system includes Inovus Medical's Table top endoscopic imaging system, with camera, endoscope and light source , providing high- resolution visualisation for realistic, hands-on training.

**Complete OR Toolkit:** Practice using the real surgical instruments provided by Inovus Medical, including rongeurs, nerve hooks, elevators, and forceps for maximum realism.

**Irrigation System:** Complete irrigation system by UpSurgeOn to perform life-like surgical procedures anywhere.

**Data-Driven Performance Analytics:** Utilise the Totum platform to capture instrument trajectories, force metrics, and procedure times, facilitating objective assessment and feedback.





# SpineHUB

## All-in-One HUB for Lumbar and Cervical Endoscopy

SpineHUB brings high-fidelity endoscopic spine simulation to any setting with its portable, tabletop design—perfect for individual training, workshops, and skills labs.

SpineHUB delivers powerful, fully tracked simulation capabilities, covering everything from core endoscopic spine techniques to complex procedural practice.

Designed for flexibility and accessibility, it supports remote learning, on-the-go training, and preoperative rehearsal without compromising on realism or performance. Totum Team licences ensure scalable training for residents, fellows, and practicing surgeons alike—anytime, anywhere.

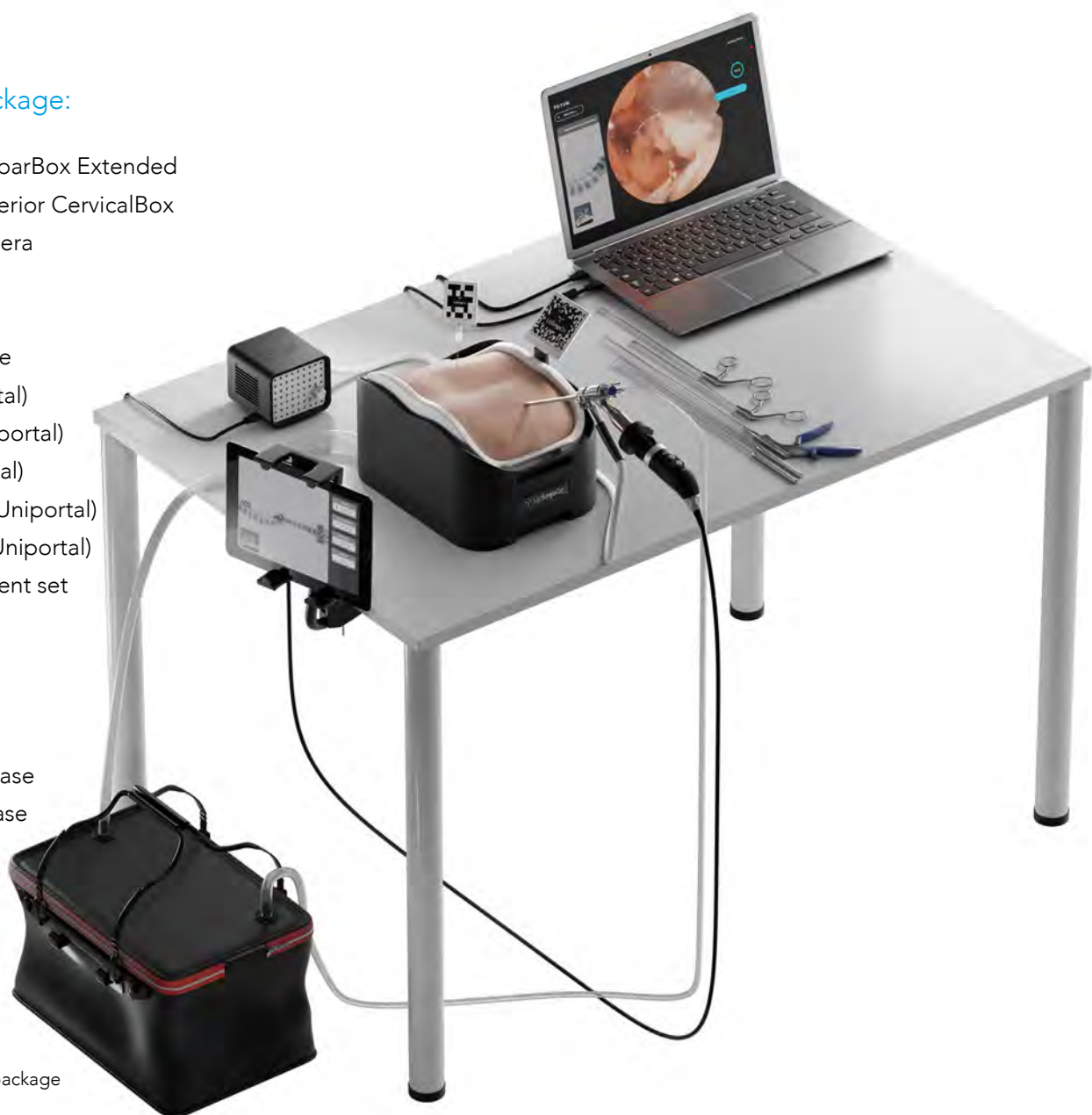
### Included in the package:

- 1x Endoscopic LumbarBox Extended
- 1x Endoscopic Posterior CervicalBox
- 1x Endoscopic Camera
- 1x LED Light Lead
- 1x Light Source
- 1x Spinal Endoscope
- 1x Rongeur (Uniportal)
- 1x Nerve Hook (Uniportal)
- 1x Elevator (Uniportal)
- 1x Biopsy Forceps (Uniportal)
- 1x Punch Forceps (Uniportal)
- 1x Bi-portal instrument set
- 1x Irrigation kit  
(pump, buckets, tubes)  
Irrigation bags
- 1x hard-shell carry case
- 1x Soft shell carry case

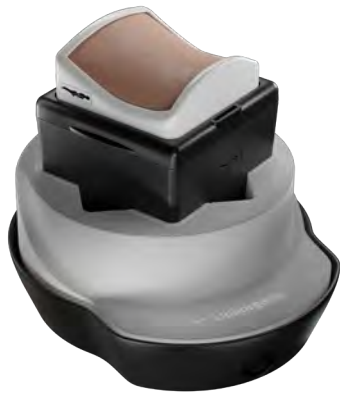
### Product code:

00002199

Laptop not included in the package



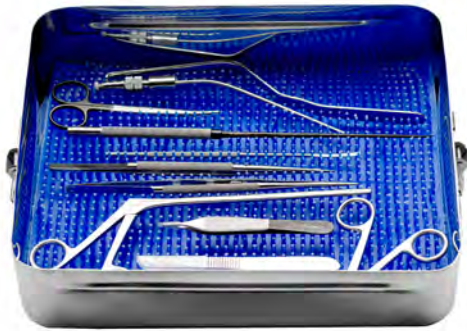
Key components included in the package:



Endoscopic Posterior CervicalBox



Endoscopic LumbarBox Extended



Bi-portal instruments



Endoscopic Camera, Spinal Endoscope and instruments



Outer soft shell wheeled carry case containing the following inner cases:

- Inner case to house components and camera
- Camera case
- Instrument and scope case



Hard-shell carry case

# SpineHUB

## Training Capabilities

Advanced Surgical Training with Integrated Augmented Reality

### Lumbar Techniques

- Practice endoscopic lumbar discectomy, extraforaminal approaches and vertebroplasty across all levels from L1 to S1.

### Cervical Techniques

- Execute posterior cervical laminectomies, laminoplasties and artery exposures from C2 to C6.

### Immersive AR Assistance

- Leverage augmented-reality overlays for live anatomical guidance that sharpens spatial awareness and accuracy.

SpineHUB combines hyper-realistic anatomical models with cutting-edge digital surgery and imaging technology to provide an immersive and effective training environment for endoscopic spinal surgeries.



# Totum Connect to perfect surgical technique



SpineHUB  
Powered by

**TOTUM**



## Guiding the way to surgical success

Connect with mentors, peers, and  
examiners to share best practice



## Unlocking the power of practice

Video capture and debrief provides an  
ecosystem for review, refinement, and  
mastery of surgical procedures



## Harnessing the power of data to transform surgical training

Objective performance metrics guide  
improvements in surgical technique  
and operative flow



## Dynamic assessment, universal recognition

Issue certificates of competency,  
gain CPD/CME points for time  
spent training, perform work based  
assessments and OSATS

**TOTUM**<sup>®</sup>

To learn more about connected surgical training  
Powered by Totum, visit [www.inovus.org](http://www.inovus.org)



## Surgical Training Remastered

---

Global Headquarters  
St Helens, United Kingdom  
E: [info@inovus.org](mailto:info@inovus.org)  
T: +44 (0)1744 752 952  
[www: inovus.org](http://www.inovus.org)

USA Headquarters  
Tampa, Florida USA  
E: [info@inovus.org](mailto:info@inovus.org)  
T: 512 481 7691  
[www: inovus.org](http://www.inovus.org)

