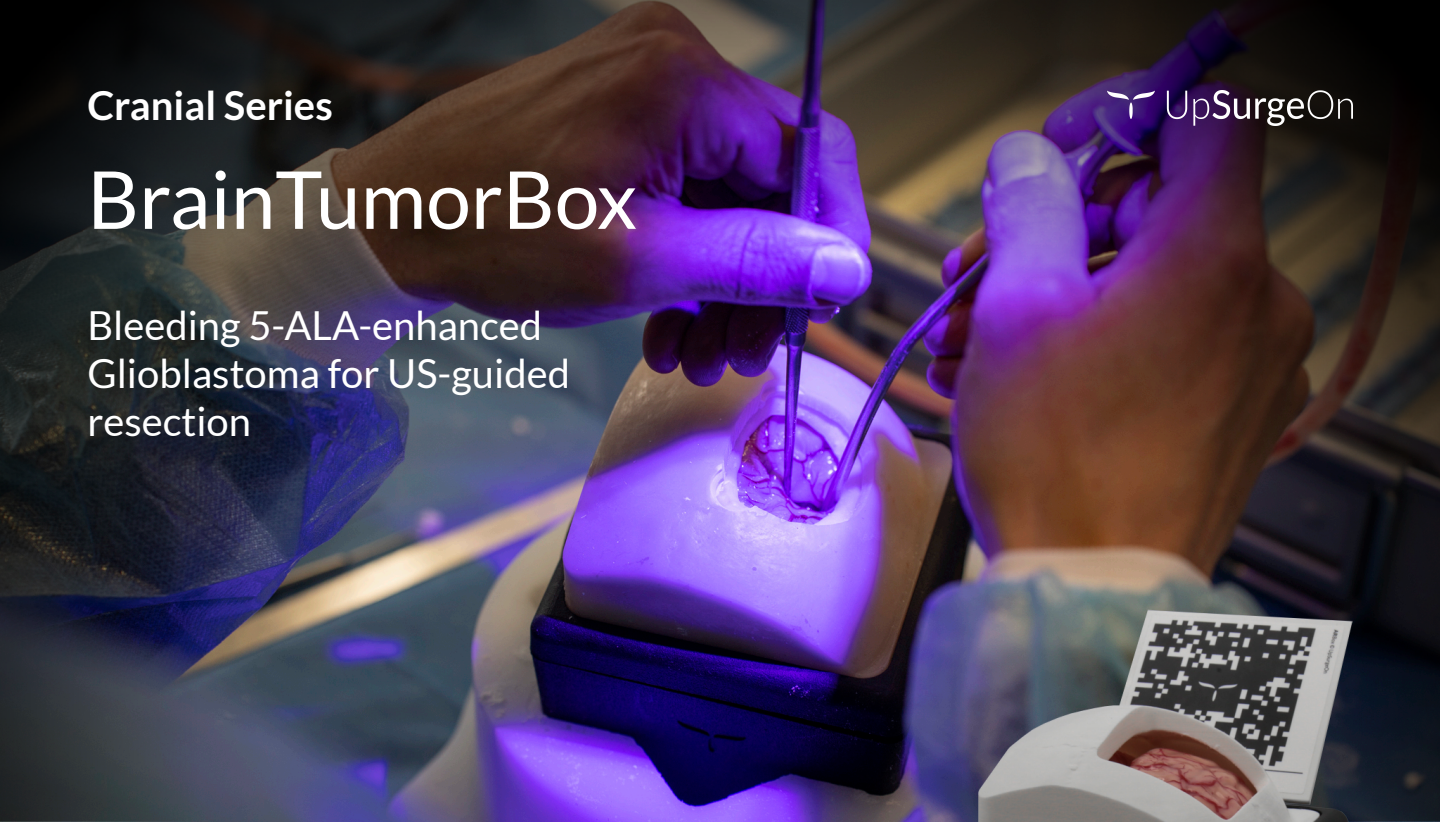


BrainTumorBox

Bleeding 5-ALA-enhanced
Glioblastoma for US-guided
resection



**Neurosurgical simulator
equipped with mobile AR,
navigation and ultrasound.**



Ultrasound

Utilize real-time ultrasound scans and high-resolution images to enhance diagnostic accuracy and streamline procedures



Compatible with Standard Navigation*

Use the Navigation Frame** along with the included MRI to start navigating your approach

*Contact us at support@upsurgeon.com to check the compatibility of your Navigation technology.

**Navigation Frame is sold separately.



Augmented Reality App

Get the Neurosurgery App to explore cases, navigate 3D models, and utilize Augmented Reality on the Box to strategize your procedure.



Mobile Navigation Available

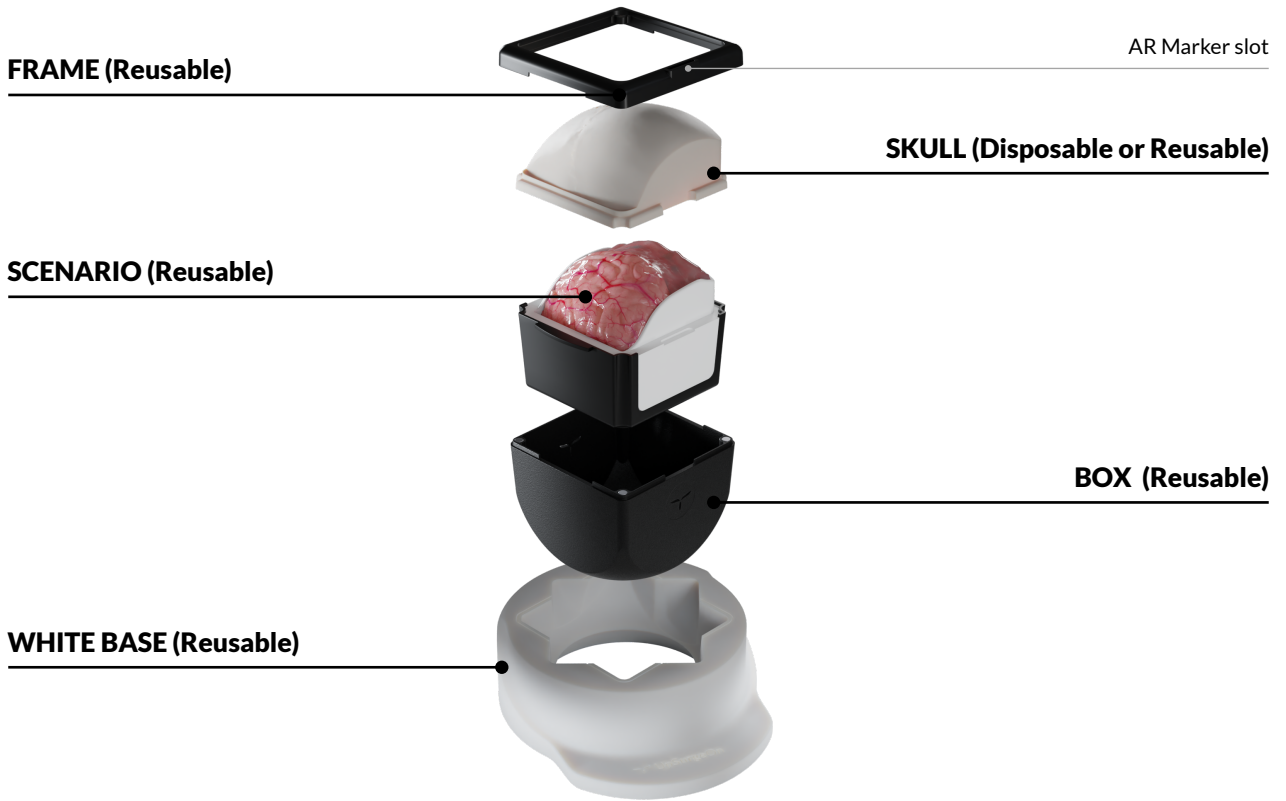
Get the Neurosurgery App, connect the magnetic probe to your smartphone, and navigate the Box through the MRI.



Disposable Parts

Designed to provide infinite training, disposable parts are intended to be used with the Box and replaced to keep track of your training.

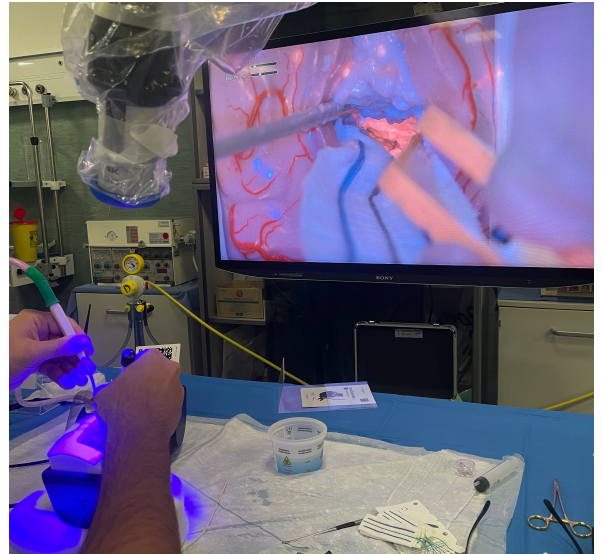
How it is composed



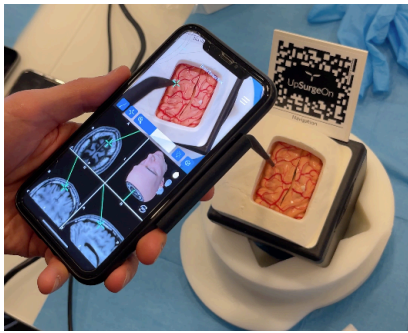
Surgical Realism

SURGICAL CAPABILITIES:

- White matter dissection
- Microsurgical resection under the microscope/exoscope
- Ultrasound guided resection
- Intraoperative bleeding managing
- Fluorescence-marked (5-ALA) frontal glioblastoma resection

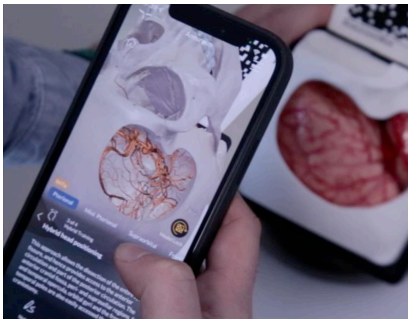


Neurosurgery App



Mobile/Standard Navigation

Use the NavigationPen included with the Neurosurgery App for mobile neuronavigation. Alternatively, use the NavigationFrame or the NavigationHead (sold separately) along with the included MRI, for standard neuronavigation.



Augmented Reality

Brain TumorBox works with an *Augmented Reality* app to provide a 360° training experience.

Frame the QR Code and download **Neurosurgery App** for **Google Play** and **Apple Store**.

Craniotomies with Disposable Skulls and BrainTumor Cartridge

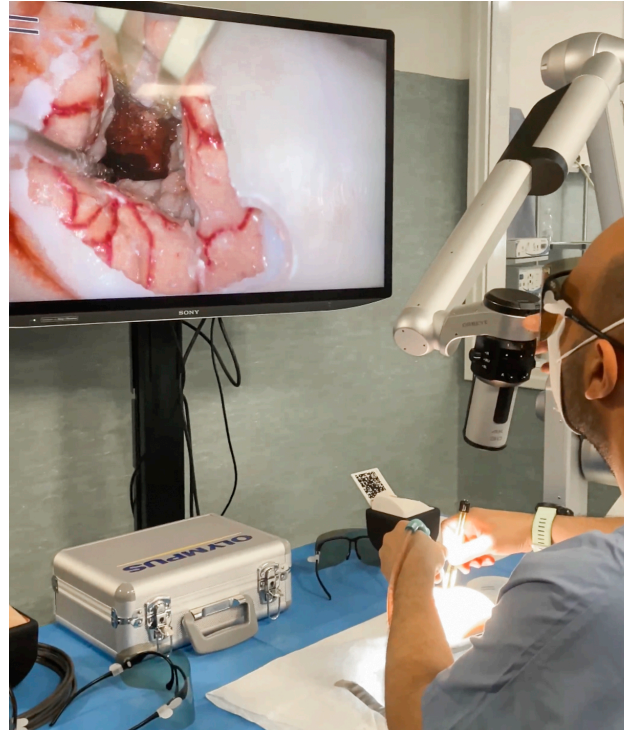
Perform craniotomies, dural openings, and reconstructions using disposable BrainTumor skulls and BrainTumor Cartridge. Afterwards, replace the skull and the cartridge and restart as many times as needed.

- Craniotomy Planning
- Craniotomy
- Dura opening
- Dura suspensions
- Dura closing
- Skull closing/reconstruction



5ALA + ultrasound guided resection

The BrainTumorBox allows you to practice resection of an intraparenchymal glioblastoma with epicenter in the frontal white matter. Once the tumor mass is reached, a fluorescence-guided (5-ALA) and ultrasound-guided resection (5ALA) can be performed. Courses based on this simulation procedure are demonstrating a huge impact in the training of young residents.



What is included

- White base for patient positioning
- 1x Spatula
- 1x Bayonet Forceps
- 1x AR Marker for Augmented Reality App
- 1x Mobile Navigation Kit
- 1x Lubricant
- 1x Reusable TumorBox
- 1x Disposable Cartridge



General warnings

THIS PRODUCT CONTAINS METAL MAGNETS: DO NOT PUT IT INTO A MAGNETIC RESONANCE SCANNER AND DO NOT USE IT WITH ANY MACHINE THAT WORK WITH ELECTROMAGNETS

- Adult assembly required
- Never leave children unattended with the box
- Never put hot liquids above the tools
- Never put chemical substances above the tools
- Wash with water, do not use chemical products
- Keep the product away from any heat source

All materials used to produce UpSurgeOn products are certified, safe and non-toxic. Use of gloves, protective glasses and mask is always suggested to maintain the cleanliness of the simulator and the tools, and as a standard practice during each simulation. Wearing safety equipment is mandatory in the use of drilling simulation.

Thank you for choosing our Technologies!

For any inquiries please contact us at info@upsurgeon.com

Go visit our website at www.upsurgeon.com

Go visit our store at www.store.upsurgeon.com