

Endoscopic LumbarBox

2 Versions: Standard & Extended
4 Sets of Pathologies
10 Operable Levels
From L1 to S1 - Left/Right



Pathologies

Medial / Paramedian / Foraminal herniations and canal stenosis, grouped into four different Pathology Sets.



Features



Modularity

10 Operable Levels in 1 single simulator | 4 Different Sets of Pathologies
Two disposable levels: Skin Level + Spine Level



Surgical Realism

With this simulators, we have achieved the highest level of realism ever seen in endoscopic surgery.



Water Management

Endoscopic LumbarBox is designed to manage high irrigation flows through a modular water collection system.



Mobile X-Ray

Get the Neurosurgery App* to simulate fluoroscopy with Mobile X-Ray Technology to set your trajectory and navigate your endoscope in real time.

**Attention: Mobile X-Ray module works on Apple Devices only.*

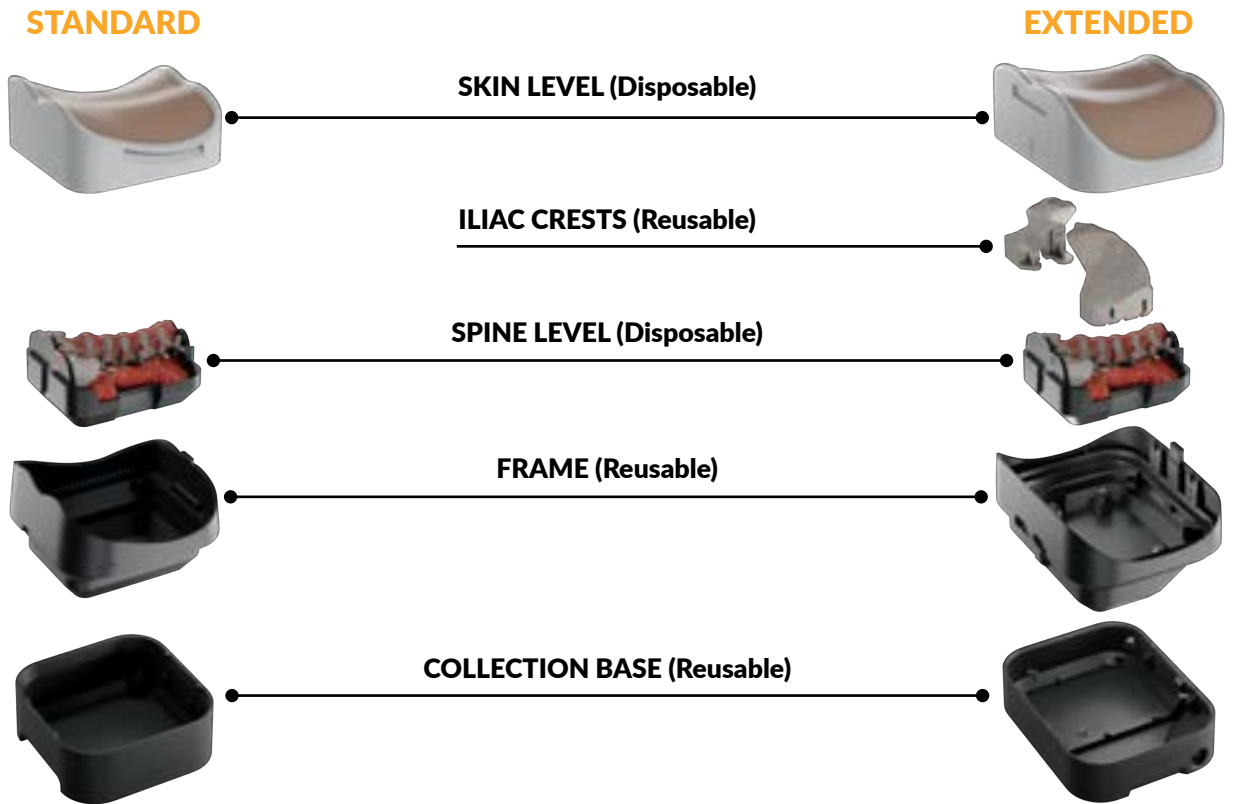


Standard X-Ray and CT Scan*

These simulators are compatible with standard X-Ray, fluoroscopy and CT. Scan them and visualize the positioning of the fixation implants.

**Feature available upon request*

How it is composed



The highest level of detail

- 10 operable levels in 1 single simulator
- 4 Different Sets of Pathologies
- 2 Compatibility Versions: Standard X-Ray compatible and non-compatible



Standard X-Ray Compatible Pathology Set 1, 2, 3 or 4



NOT Compatible with Standard X-Ray Pathology Set 1, 2 or 3

PROCEDURES:

- PELD (Percutaneous Endoscopic Lumbar Discectomy)
- TELD (Transforaminal Endoscopic Lumbar Discectomy)
- Monoportal and biportal procedures

SURGICAL CAPABILITIES:

What you can perform in both Sets of Pathologies:

- Multiple endoscopic Laminectomies and flavectomies (L1-L5)
- Multiple endoscopic discectomies
Nerve root decompression through discectomies feasible from L1 to S1 (5 discectomies, L1-2, L2-3, L3-4, L4-5, L5-S1)

What you can perform in Pathology Set 1 only:

- Canal Stenosis Decompression (L4-5)



Pathology Set 1



- **Red:** Standard X-Ray Compatible
- **Black:** NOT Compatible with Standard X-Ray



- L1-2 Left | Paramedian Herniation
- L1-2 Right | Extraforaminal Herniation
- L2-3 | Central Herniation
- L3-4 Left | Foraminal Herniation
- L3-4 Right | Paramedian Herniation
- L4-5 Right | Extraforaminal Herniation
- Canal Stenosis
- L5-S1 Left | Foraminal Herniation
- L5-S1 Right | Paramedian Herniation

Pathology Set 2



- **Red:** Standard X-Ray Compatible
- **Black:** NOT Compatible with Standard X-Ray



- L1-L2 | Bilateral paramedian herniation
- L2-L3 | Bilateral paramedian herniation
- L3-L4 | Bilateral paramedian herniation
- L4-L5 | Bilateral paramedian herniation
- L5-S1 | Bilateral paramedian herniation

Pathology Set 3



- **Red:** Standard X-Ray Compatible
- **Black:** NOT Compatible with Standard X-Ray



Larger Interlaminar and Foraminal Space

- L1-L2 | Bilateral paramedian herniation
- L2-L3 | Bilateral paramedian herniation
- L3-L4 | Bilateral paramedian herniation
- L4-L5 | Bilateral paramedian herniation
- L5-S1 | Bilateral paramedian herniation

Pathology Set 4



● Red: Standard X-Ray Compatible



Vertebroplasty Compatible

Larger Interlaminar and Foraminal Space

No Pathologies

Surgical Realism



1. Ultra-accurate anatomy
2. Hyper-realistic materials
3. Designed for wet and dry simulation

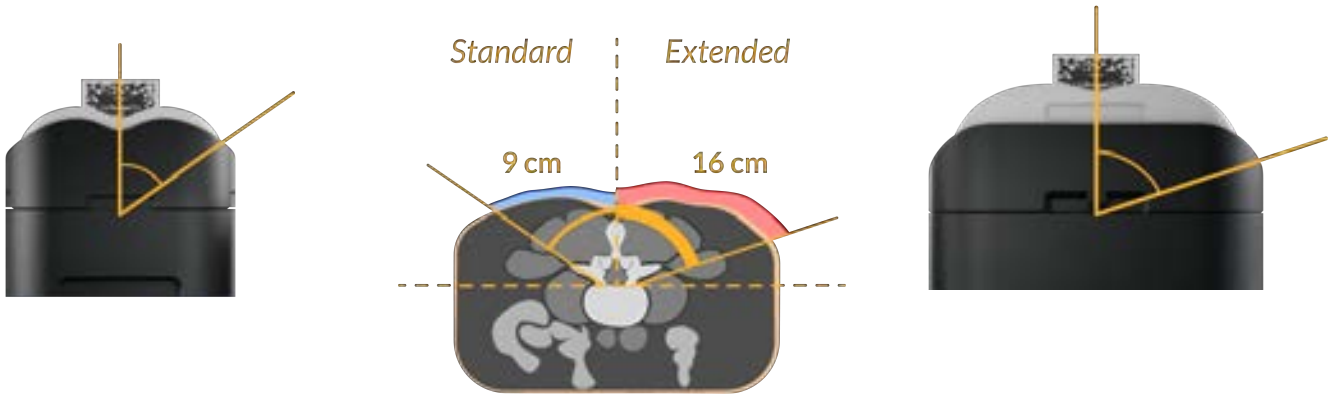
ANATOMY INCLUDED IN THIS APPROACH:

- Skin
- Subcutaneous fat
- Paravertebral muscles
- Vertebrae from L1 to S1
- Flavum Ligament
- PLL (Posterior Longitudinal Ligament)
- ALL (Anterior Longitudinal Ligament)
- Spinal cord
- Nerve roots
- Peridural fat
- Peridural fat



Endoscopic LumbarBox Extended Version

Designed also for endoscopic transforaminal approaches



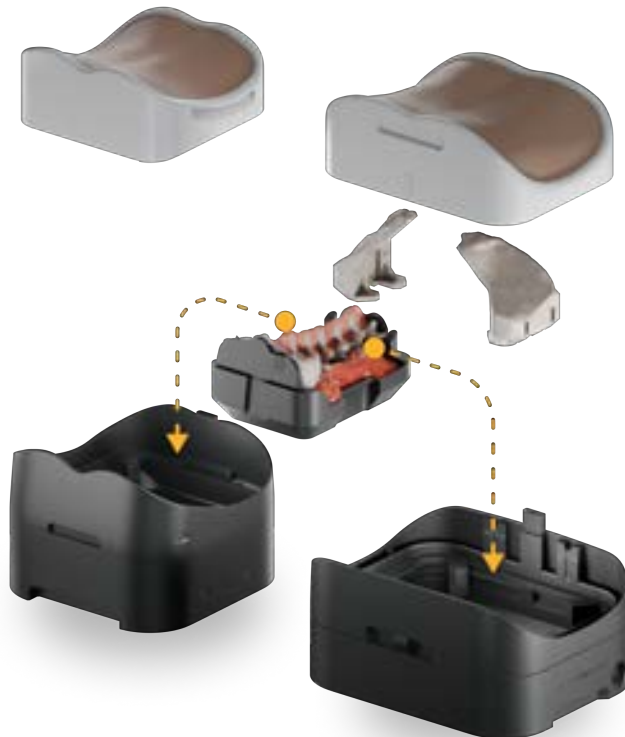
WHAT YOU CAN DO

In the *Extended* version, it is possible to perform all the procedures found in the *Endoscopic LumbarBox* with the addition of the more lateral approaches. The *Extended* version uses the same spinal levels as the *Endoscopic LumbarBox*

NEW SIZE, SAME SPINE LEVEL

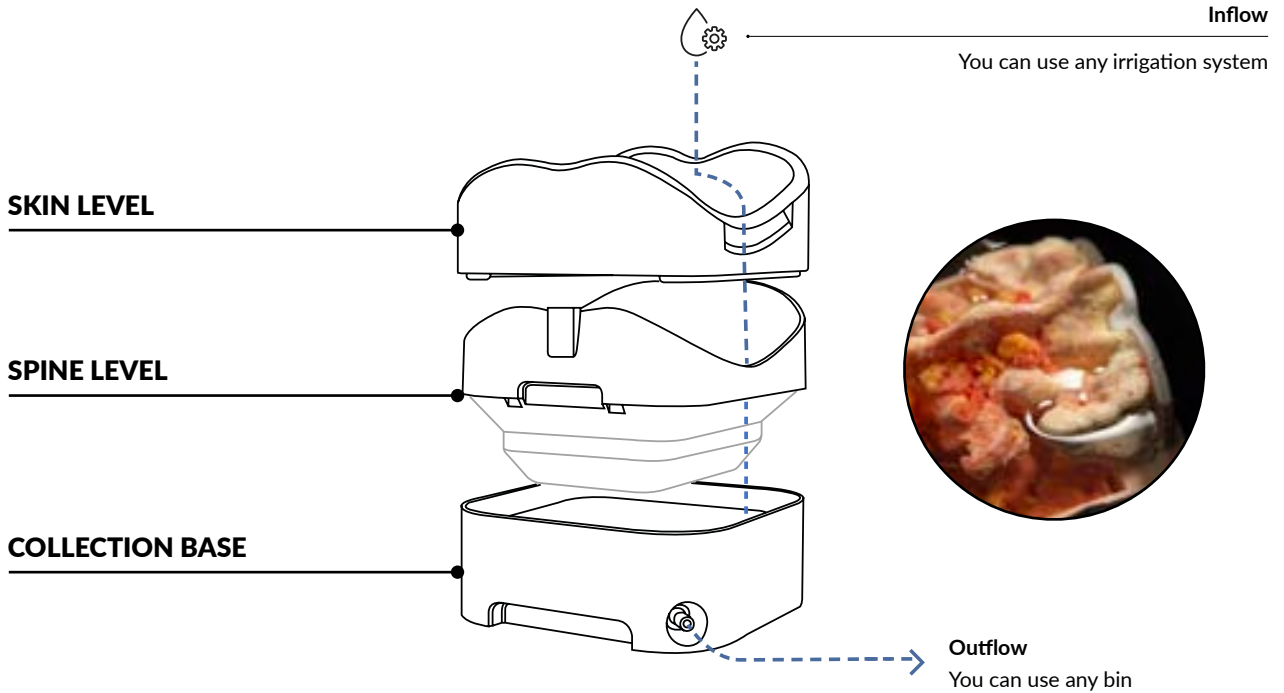
Endoscopic LumbarBox
Standard

Endoscopic LumbarBox
Extended



Water Management

The simulator is equipped with an internal water drainage and outflow system, facilitating the management of high endoscopic flows anywhere and preventing any leakage during surgical procedures.

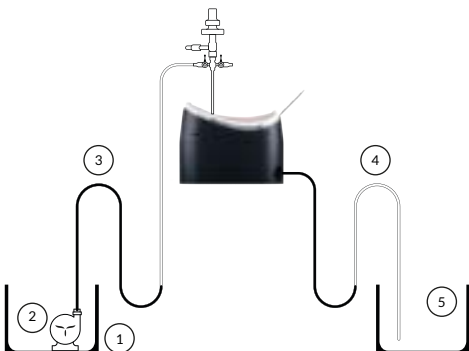


UpSurgeOn Irrigation System*

If requested, UpSurgeOn can provide a complete Irrigation KIT that includes:

1. Inflow Container
2. Water Pump
3. Pipe
4. Drainage Pipe
5. Outflow Container

**Sold separately*



Mobile X-Ray

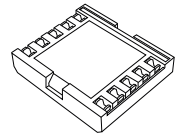
Get the **Neurosurgery App*** to simulate **fluoroscopy** with **Mobile X-Ray Technology** to set your trajectory and navigate your **endoscope** or any other **tubular instrument** in real time.

**Attention: Mobile X-Ray module works on Apple Devices only.*



Neurosurgery App*

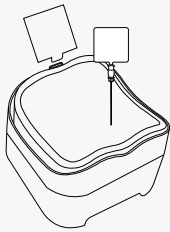
+



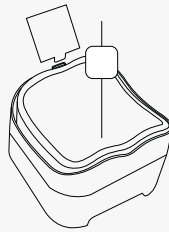
Mobile X-Ray Kit

Possible ways to use it:

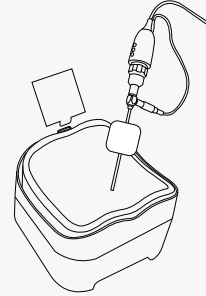
Spine needle



K-wire



Custom Instrument



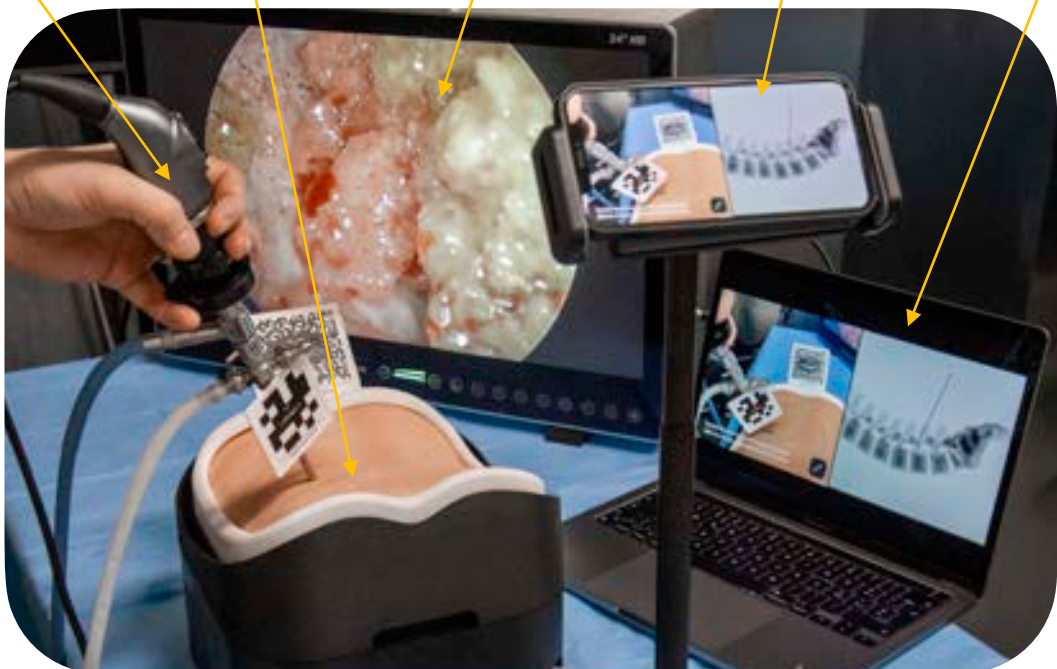
Endoscope with AR Marker

Simulator

Endoscopy Monitor

Your Device with Camera and App

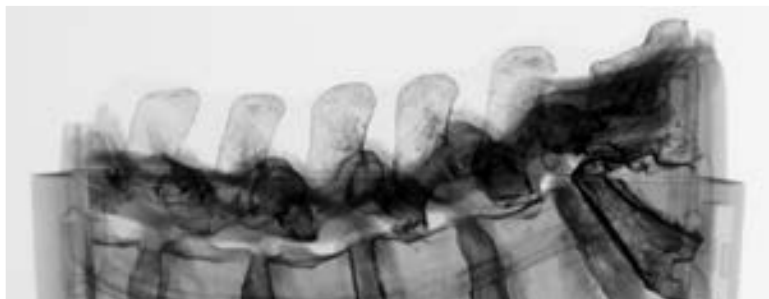
Your Device with Mirroring



Standard X-Ray and CT Scan*

The Endoscopic LumbarBox, in addition to the Mobile X-Ray Feature, is compatible with Standard X-Ray. Thanks to its compatibility, fluoroscopies can be performed at the end of your exercise to verify the positioning of the fixation implants, and the success of your surgery.

**Feature available upon request.*



What is included

- Endoscopic LumbarBox:
 - 1 Skin Level
 - 1 Spine Level
 - 1 Collection Base
- Mobile X-Ray Kit
- Drainage Pipe



General warnings

THIS PRODUCT CONTAINS METAL MAGNETS: DO NOT PUT IT INTO A MAGNETIC RESONANCE SCANNER AND DO NOT USE IT WITH ANY MACHINE THAT WORK WITH ELECTROMAGNETS

- Adult assembly required
- Never leave children unattended with the box
- Never put hot liquids above the tools
- Never put chemical substances above the tools
- Wash with water, do not use chemical products
- Do not use hot water for the irrigation system
- Use the drill **ONLY** when the Skin Level is assembled over the Spine Level
- Keep the product away from any heat source
- After use, is recommended to drain the water from all the components, dry them, and store them in a dry environment

All materials used to produce UpSurgeOn products are certified, safe and non-toxic. Use of gloves, protective glasses and mask is always suggested to maintain the cleanliness of the simulator and the tools, and as a standard practice during each simulation. Wearing safety equipment is mandatory in the use of drilling simulation.

Thank you for choosing our Technologies!

For any inquiries please contact us at info@upsurgeon.com

Go visit our website at www.upsurgeon.com

Go visit our store at www.store.upsurgeon.com