

Posterior Cervical Box

Hyper-realistic Spinal Surgery Simulator for Posterior Approaches to the Cervical Spine

From C2-C6



Pathologies

Spondylotic Stenosis: 5 levels of posterior compression to be operated through posterior laminectomies (C2, C3, C4, C5, C6).



Features



Modularity

6 Operable Levels in 1 single simulator
Disposable Spine Level



Surgical Realism

The most realistic simulator for posterior cervical approach



Mobile X-Ray*

Get the Neurosurgery App and simulate fluoroscopy using Mobile X-Ray Technology to set landmarks and plan your surgical approach.

**Attention: Mobile X-Ray module works on Apple Devices only.*



Standard X-Ray and CT Scan

The simulator is compatible with standard X-Ray, fluoroscopy and CT. Scan it and visualize the positioning of the fixation implants.



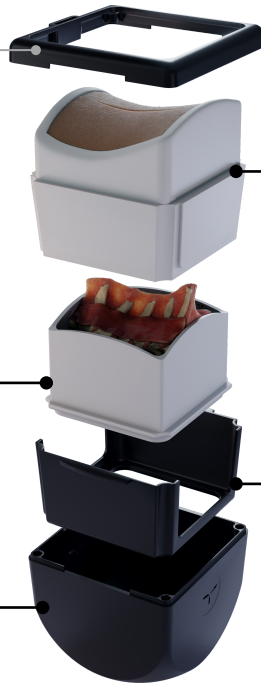
Compatible with Standard Navigation

Upload the MRI scan on the navigator and start navigating the Box.

**Contact us at support@upsurgeon.com to check the compatibility of your Navigation technology.*

How it is composed

AR Marker slot



SKIN LEVEL

*Open Version: Reusable
MIS Version: Disposable*

SPINE LEVEL (Disposable)

FRAME (Reusable)

BASE (Reusable)

The highest level of detail

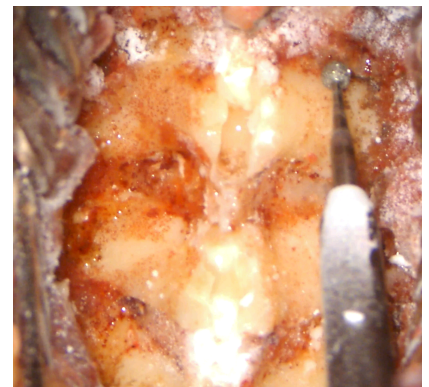
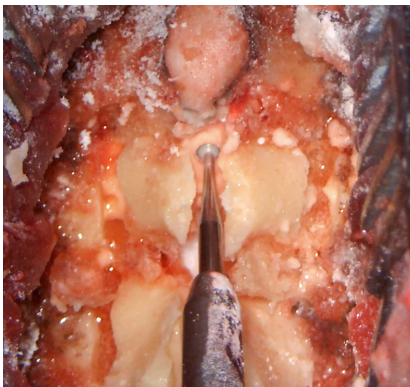
PROCEDURES:

Multilevel posterior decompressions for spondylotic myelopathy through:

- Posterior Laminectomies from C2 to C6 (5 laminectomies)
- Posterior Laminoplasties from C2 to C6 (5 laminoplasties)
- Screw fixations from C2 to C6

SURGICAL CAPABILITIES:

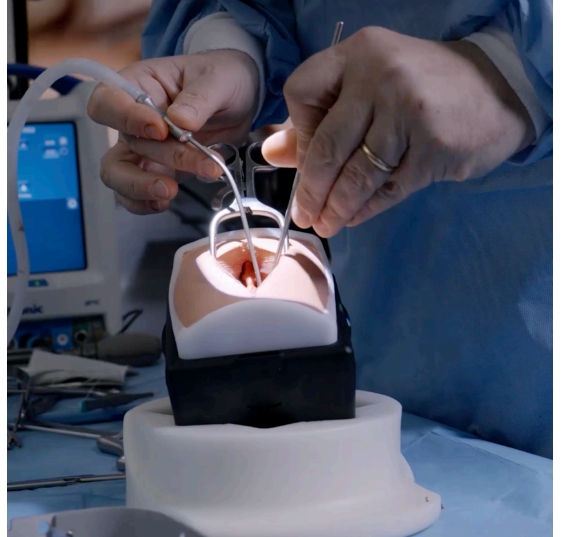
- **Laminectomies, laminoplasties and flavectomies**
5 (C2, C3, C4, C5, C6)
- **Instrumented surgery**
Placement of screws and any other type of posterior cervical fixation, according to the above-mentioned levels
- **Instrumented surgery**
Placement of any artificial disc and body, according to the above-mentioned levels (disc cage, somatic cage, anterior plates, somatic screws)



Surgical Realism



1. Ultra-accurate anatomy
2. Hyper-realistic materials



ANATOMY INCLUDED IN THIS APPROACH:

- Skin
- Vertebral bodies from C2 to C6
- Intersomatic discs from C2 to C6
- Paravertebral muscles
- Vertebral arteries
- PLL (Posterior Longitudinal Ligament)
- Spinal cord
- Peridural fat

Mobile X-Ray

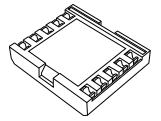
Get the **Neurosurgery App*** to simulate **fluoroscopy** with **Mobile X-Ray Technology** to set your trajectory and navigate your **endoscope** or any other **tubular instrument** in real time.

**Attention: Mobile X-Ray module works on Apple Devices only.*



Neurosurgery
App*

+



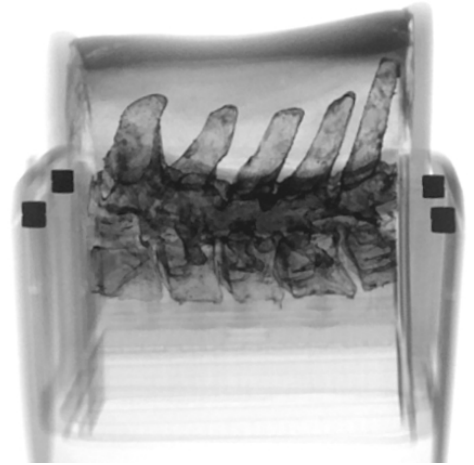
Mobile X-Ray
Kit



Standard Imaging

Scan the box with X-Ray and CT to verify the level and visualize the positioning of the fixation implants*.

*The box is not designed for MRI; do not subject it to MRI scans as it contains metallic components.

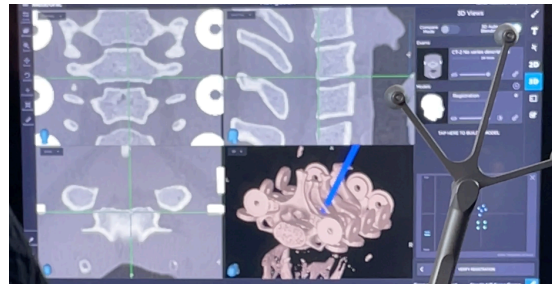


Navigation*

Upload the CT scan on the navigator and start navigating the Box.

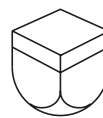
*Contact us at support@upsurgeon.com to check the compatibility of your Navigation technology.

Please note: The NavigationFrame is not included.



Disposable Parts

Designed to specifically mimic the properties of human tissues, such as softness, elasticity, and texture.



Box
Reusable

+



Vertebral Level
Disposable

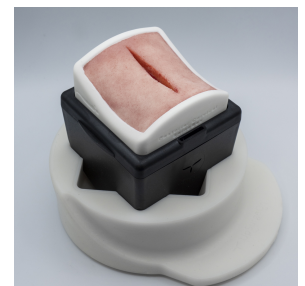
+

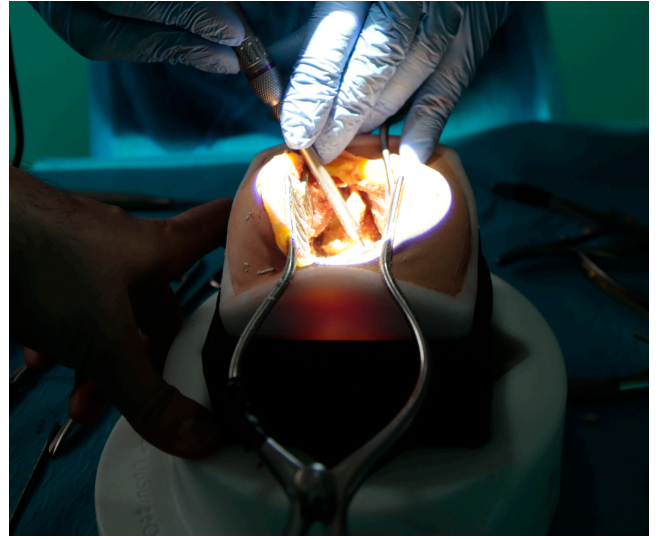
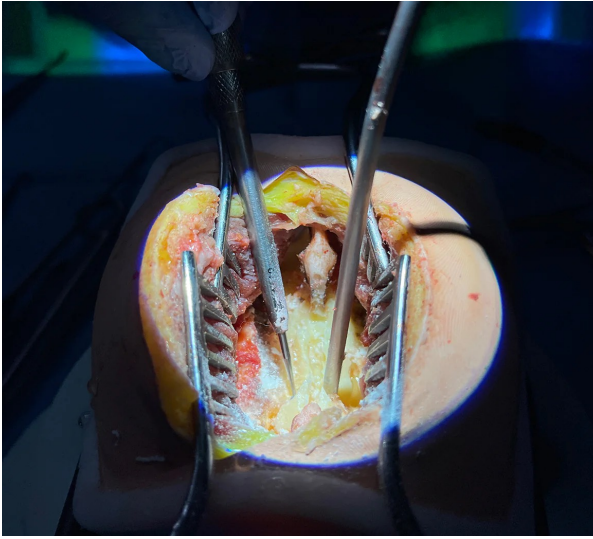


Skin Level
Reusable

What is included

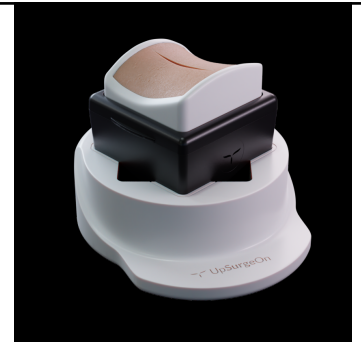
- Box
- 1 Skin Level
- 1 Vertebral Level
- White base for Box positioning
- AR Marker
- Mobile X-Ray tools
- Mobile Navigation tools
- Lubricant





What is included

- Posterior CervicalBox:
 - Skin Layer
 - Spine Layer
 - Box
 - White Base
- Mobile X-Ray Kit



General warnings

THIS PRODUCT CONTAINS METAL MAGNETS: DO NOT PUT IT INTO A MAGNETIC RESONANCE SCANNER AND DO NOT USE IT WITH ANY MACHINE THAT WORK WITH ELECTROMAGNETS

- Adult assembly required
- Never leave children unattended with the box
- Never put hot liquids above the tools
- Never put chemical substances above the tools
- Wash with water, do not use chemical products
- Keep the product away from any heat source

All materials used to produce UpSurgeOn products are certified, safe and non-toxic. Use of gloves, protective glasses and mask is always suggested to maintain the cleanliness of the simulator and the tools, and as a standard practice during each simulation. Wearing safety equipment is mandatory in the use of drilling simulation.

Thank you for choosing our Technologies!

For any inquiries please contact us at info@upsurgeon.com

Go visit our website at www.upsurgeon.com

Go visit our store at www.store.upsurgeon.com