

Posterior Lumbar Box

10 Operable Levels
From L1 to S1 - Left/Right



Pathologies

- 3 Paramedian Herniations
- 2 Foraminal Herniations
- 2 Extraforaminal Herniations
- 1 Central Herniation
- 1 Canal Stenosis

Features



Modularity

10 Operable Levels in 1 single simulator
Two disposable levels: Skin Level + Spine Level



Surgical Realism

With this simulator, we have achieved the highest level of realism ever seen in spine surgery.



Mobile X-Ray*

Get the Neurosurgery App and simulate fluoroscopy using Mobile X-Ray Technology to set landmarks and plan your surgical approach.

**Attention: Mobile X-Ray module works on Apple Devices only.*



Standard X-Ray and CT Scan

The simulator is compatible with standard X-Ray, fluoroscopy and CT. Scan it and visualize the positioning of the fixation implants.



Compatible with Standard Navigation

Upload the MRI scan on the navigator and start navigating the Box.

**Contact us at support@upsurgeon.com to check the compatibility of your Navigation technology.*

How it is composed

AR Marker slot



SKIN LEVEL

Open Version: Reusable
MIS Version: Disposable

SPINE LEVEL (Disposable)



Attachment for Navigation* Tracker

* Check the compatibility of your Navigation System.
Please contact us for a complete list of compatible systems and technologies.

BASE (Reusable)



Removable cover for
Navigation* Tracker Attachment

The highest level of detail

PROCEDURES:

- **PLIF** (Posterior Lumbar Interbody Fusion)
- **TLIF** (Transforaminal Lateral Interbody Fusion)
- **Open and percutaneous approaches** (open reusable Skin Level and MIS reusable Skin Level respectively)

SURGICAL CAPABILITIES:

- **Laminectomies and flavectomies** from L1 to L5
- **Multiple discectomies**
Nerve root decompression through discectomies feasible from L1 to S1 (5 discectomies, L1-2, L2-3, L3-4, L4-5, L5-S1)
- **Multiple corpectomies**
Total corpectomy feasible from L1 to L5 (5 corpectomies)
- **Instrumented surgery**
Placement of any artificial disc and body, according to the above-mentioned levels (disc cage, somatic cage, anterior plates, somatic screws)

PATHOLOGIES (9):

Left Side

L1-2 | Paramedian Herniation
L3-4 | Foraminal Herniation
L5-S1 | Foraminal Herniation



Right Side

L1-2 | Extraforaminal Herniation
L3-4 | Paramedian Herniation
L4-5 | Extraforaminal Herniation
L5-S1 | Paramedian Herniation

L2-3 | Central Herniation
L4-5 | Canal Stenosis

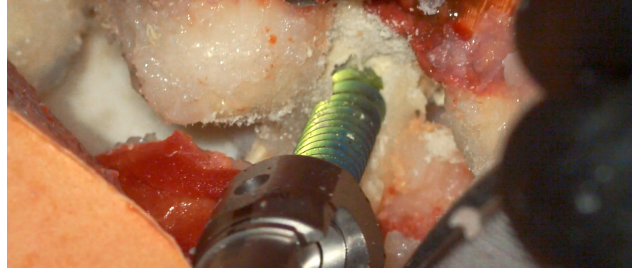
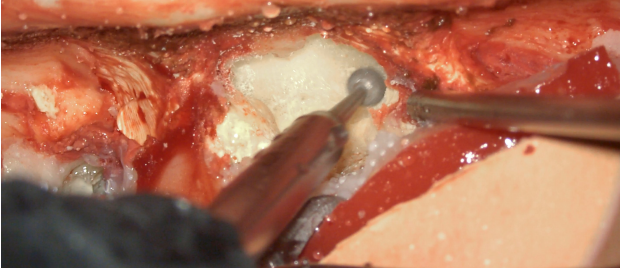
The highest level of detail



1. Ultra-accurate anatomy
2. Hyper-realistic materials

ANATOMY INCLUDED IN THIS APPROACH:

- Open and closed skin
- Paravertebral muscles
- Flavum Ligament
- PLL (Posterior Longitudinal Ligament)
- Vertebrae from L1 to S1
- Discs from T12-L1 to L5-S1 (5 discs)
- Spinal cord
- Nerve roots
- Peridural fat



Mobile X-Ray

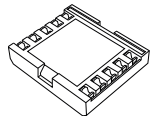
Get the Neurosurgery App* to simulate fluoroscopy with Mobile X-Ray Technology to set your trajectory and navigate your instrument in real time.

**Attention: Mobile X-Ray module works on Apple Devices only.*



Neurosurgery App*

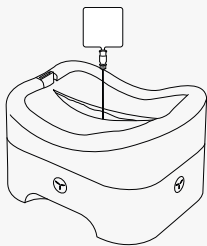
+



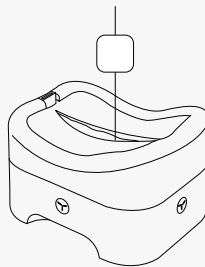
Mobile X-Ray Kit

Possible ways to use it:

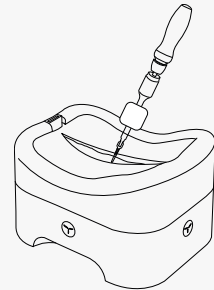
Spine needle



K-wire



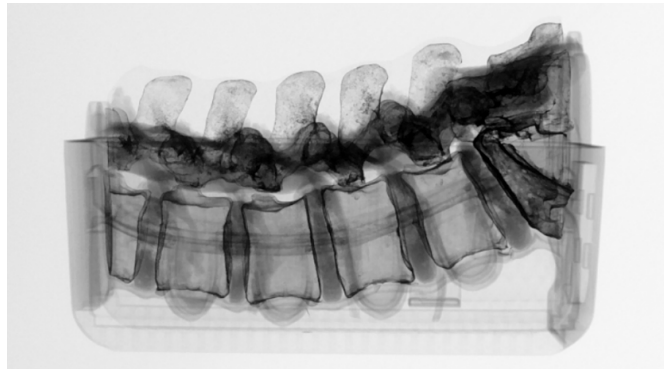
Custom Instrument



Standard Imaging

Scan the box with X-Ray and CT to verify the level and visualize the positioning of the fixation implants*.

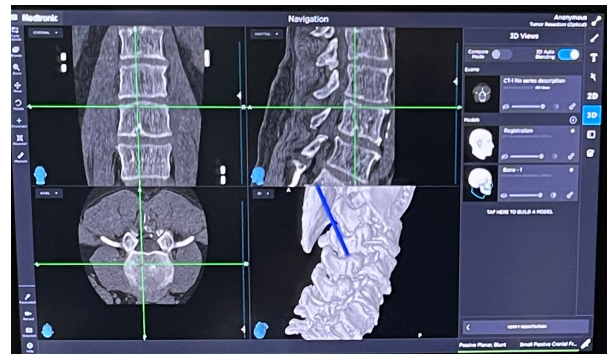
*The box is not designed for MRI; do not subject it to MRI scans as it contains metallic components.



Navigation*

Upload the CT scan on the navigator and start navigating the Box.

* Check the compatibility of your Navigation System. Please contact us for a complete list of compatible systems and technologies.

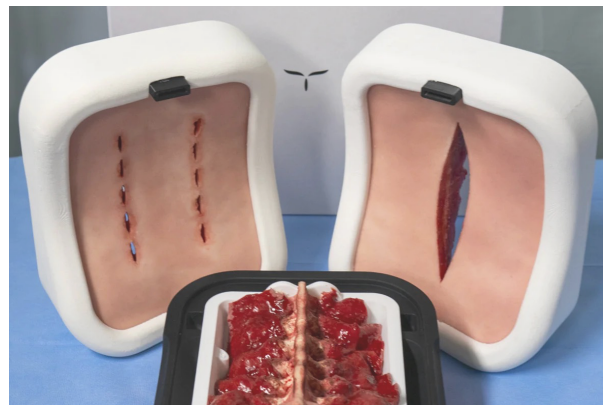
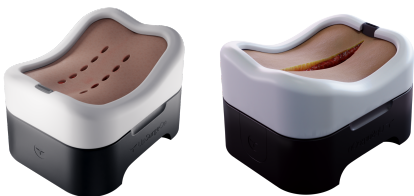


Disposable Parts

Designed to specifically mimic the properties of human tissues, such as softness, elasticity, and texture.



OPEN AND MINIMALLY INVASIVE SKIN LEVEL



What is included

- Posterior LumbarBox:
 - 1 Skin Level (Open or MIS)
 - 1 Spine Level
 - 1 Base
- Mobile X-Ray Kit
- Mobile Navigation Kit



General warnings

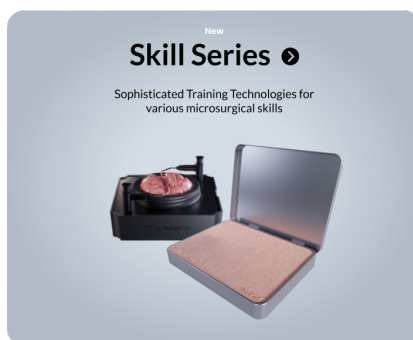
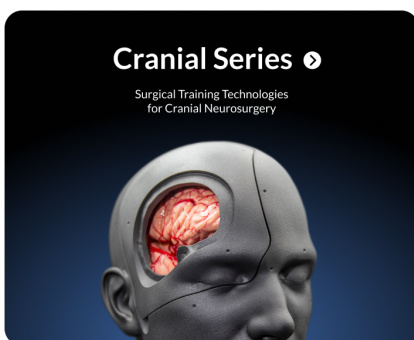
**THIS PRODUCT CONTAINS METALS:
DO NOT PUT IT INTO A MAGNETIC RESONANCE!**

- Adult assembly required
- Never leave children unattended with the box
- Never put hot liquids above the tools
- Never put chemical substances above the tools
- Wash with water, do not use chemical products
- Keep the product in a dry environment
- Keep the product away from any heat source
- Pay attention to your eyes when using

All materials used to produce UpSurgeOn products are certified, safe and non-toxic. Use of gloves, protective glasses and mask is always suggested to maintain the cleanliness of the simulator and the tools, and as a standard practice during each simulation. Wearing safety equipment is mandatory in the use of drilling simulation.

Discover our Technologies

We have developed the most advanced microsurgical simulation Technologies to date, with the goal of raising the bar for medical education and training.



Thank you for choosing our Technologies!

For any inquiries please contact us at info@upsurgeon.com

Go visit our website at www.upsurgeon.com

Go visit our store at www.store.upsurgeon.com